

SPRUNK ANGUS & ERDMANN ANGUS

15TH ANNUAL JOINT PRODUCTION SALE

FRIDAY, FEBRUARY 27, 2026



1 PM • LISBON, ND • RANSOM COUNTY FAIRGROUNDS

SELLING 64 Bulls, 16 Bred Heifers, & 12 Open Heifers

WELCOME TO THE 15TH ANNUAL

SPRUNK-ERDMANN PRODUCTION SALE

Here we are—15 years in—celebrating a partnership built on family values and a shared commitment to producing cattle that work for our customers. From front to back, these pages represent 15 years of dedicated work—understanding not only our genetics, but how those genetics perform for the people who rely on them. Behind every decision is the drive and passion to help our customers succeed. And that's exactly it—our drive is your drive for continued success in your cattle operation. It's what motivates us and guides the decisions we make every day.

To top it all off, this year's offering is nothing short of SPECIAL. Looking back at last year's catalog letter, we felt we were at the peak with the 2025 offering—but this year, we've raised the bar once again. When we say these pages represent something from front to back, we mean it. You'll find power and carcass merit without sacrificing eye appeal or structural integrity, along with cow families intentionally managed to strengthen maternal traits.

We've narrowed our focus on what it takes to raise great cows, and we're proud to say that progress is showing. That said, we're not done yet. There's always room to improve, and we remain committed to pushing forward and getting better for the future.

A FEW HIGHLIGHTS FROM THIS YEAR'S SALE OFFERING:

- 27 of the 64 bulls qualify for the CAB Targeting the Brand stamp
- 46 of the 64 bulls rank in the top 25% of the Angus breed for WW EPD, including 28 in the top 10%
- 42 of the 64 bulls rank in the top 25% or better of the breed for YW EPD, with 25 in the top 10%
- 25 of the 64 bulls rank in the top 25% or better for \$M
- 41 of the 64 bulls rank in the top 25% or better for \$W

SINCERELY,

*Jeremy & Stacy Erdmann Family
Dale & Dana Sprunk Family*

THIS IS US... Family, Friends, & Neighbors



Thank you to all the people who continue to help us each and every year.

You all mean the world to us and many times put in just as many hours

doing all the behind the scenes work to make this sale happen.



Dale & Dana Sprunk Family



Jeremy & Stacy + Rylee & Kaylee

SALE DETAILS

SALE SCHEDULE:

Friday, February 27, 2026

1 PM | Ransom County Fairgrounds Beef Barn

7th Ave. West, Lisbon, ND 58054

SALE DAY PHONES:

If you are unable to attend the sale and would like to bid, please contact any of the following and your bid will be accepted. All dealings are handled in a 100% honest manner.

Jeremy Erdmann 701-680-2937

Dale Sprunk 701-238-5432

Ray Haugen 701-840-9256

AUCTIONEER:

Dustin Carter 712-898-9972


LIVESTOCK PRESS REPRESENTATIVES:

Vern Frey, *Frey Livestock Sales & Service Inc.* 701-721-0344

Tony Heins, *Western Ag Reporter* 701-400-4435

Andrew Swanson, *American Angus Association* 507-829-4133

ONLINE BIDDING: Is available through DVAuction.com. Advanced registration request for sale day. For sale day assistance, contact

Logan Hoffmann 701-388-2618  Broadcasting Real-Fine Auctions

ANNOUNCEMENTS: Announcements from the auction block will take precedence over the printed material in this sale book and other announcements.

VIEWING THE CATTLE: Our ranches are always open to view the sale cattle or to view our cow herds. Videos of all lots will be online at DVAuction.com.

PREVIEW & SOCIAL: A pre-sale preview and social with a light meal and beverages will be held on the evening of Thursday, Feb. 26th at the Ransom County Fairgrounds. Come on in to see the cattle ahead of the sale!

LUNCH: Free lunch, Dana's Special Meatballs, Mashed Potatoes and gravy, with a Lent option as well.

ACCOMMODATIONS:

Lisbon Inn - Lisbon, ND - 701-683-9076

Enderlin Inn - Enderlin, ND - 701-437-2000

GrandStay - Valley City, ND - 701-490-3500

AmericInn by Wyndham - Valley City, ND - 701-845-5551

INSURANCE: All cattle in the sale will become the buyer's responsibility at the time of the final bid. Insurance can be purchased on sale day from Christopher Nelson, Martin-Trudeau Insurance, Mitchell, SD - 605-656-6345. Martin-Trudeau Insurance carries not only death loss insurance but also policies with disease and infertility coverage as well.

KEEP / DELIVERY: We will be offering free keep on bulls only up until April 1 and bulls will be semen tested prior to delivery. Free delivery on bulls only up to 150 miles. Arrangements can be made on delivery of females if needed.

TERMS & CONDITIONS: Cattle will sell under the suggested Terms and Conditions of the American Angus Association (http://www.angus.org/Pub/suggested_sale_terms.pdf). A copy of these recommendations will be available at the sale for your convenience.

If you have any questions, please contact us. In no instance shall the seller be responsible for more than the purchase price of the bull. We guarantee to provide you with a sound breeding bull, capable of passing a semen test within 14 months of age. There will be a \$50 discount for bulls only taken home and paid in full on sale day. Individual arrangements may be made with each sale consignor. Contact a ranch representative.

GENETIC TESTING: Registered Angus Bulls and Females in this sale have been genetically tested and are parentage qualified. All were completed using the AngusGS genetic testing. All cattle in the sale have been tested and are free from any known genetic defects, as noted.

JOHNE'S DISEASE TESTING: Both ranches care about the health of our livestock and so have taken the step into annually testing our herds for Johne's Disease. Sprunk Angus has tested the last 20 years and Erdmann Angus has tested the last 14 years. All dams of animals being sold have tested negative for Johne's.

SUPPLEMENT SHEET: A supplement sheet with Ultrasound Data, Scrotal Measurements, and Actual Yearling Weights will be available sale day! Ultrasound data completed by Bruns Ultrasound Service, Madison, S.D.

IN CASE OF INCLEMENT WEATHER: Listen to KSJB AM 600 or Ag News 890 for changes in time, date or location due to weather conditions.

SEMEN RIGHTS: The breeder reserves 1/3 semen revenue interest on all bulls and the right to collect up to 100 units of semen on any of the bulls, for our own use. Select bulls have other arrangements specific to that bull. This will be announced on sale day. The semen will be collected at our expense and at the buyer's convenience. Please contact us if you have any questions.

LIABILITY: Sprunk Angus & Erdmann Angus ranches and their families assume no liability for accidents or injuries that occur on the sale premises.

ADVERTISING: Catalog, ads, pasture pictures, and sale day photos by Addison K Creative | Addison Rall | www.addisonkdesign.com

PHOTOGRAPHY: Lot photos by LG Photography | Lindsey Galbreath

VISIT OUR WEBSITES:

www.erdmannangusranch.com - www.sprunkangus.com

PLEASE BRING THIS CATALOG ON SALE DAY

F
E
A
T
U
R
E
D
E
R
D
M
A
N
N
H
E
R
D
S
I
R
E

CHESTNUT FORCE 482

AAA # 20445954



DOB: 01.16.2022 • Wilks Regiment 9035 x Chestnut Captivation 958
Weaning Wt.: 1038 lbs with a ratio of 127 • Yearling Wt.: 1664 lbs with a ratio of 122 • Scanned: 16.7 REA with a 3.96% IMF

CE	BW	WW	YW	SC	HP	GEM	MILK	DOC	CLAW	ANGLE	CW	MARB	RE	FAT	SM	SW	SF	SG	SB	SC
9	1.2	105	188	0.84	11.5	3	31	26	0.57	0.48	87	0.64	1.40	-0.011	59	108	122	63	186	300



In 2023, following consistent customer feedback and industry trends, Jeremy initiated a focused search for a sire capable of correcting the direction of modern Angus cattle—he was wanting more substance, stronger & cleaner foot structure, and added performance without sacrificing carcass value or maternal excellence.

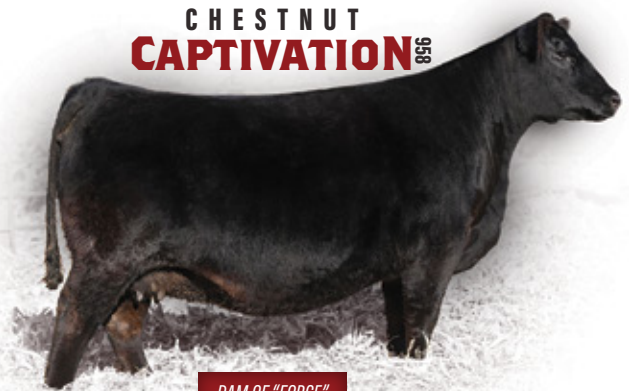
That search concluded quickly. After Denver, a glimpse of Glen Johnson’s carload pointed us toward Force. A visit to Chestnut Angus confirmed our expectations. Force combined bone, foot quality, growth, muscle, and phenotype in a way that commanded attention.

We partnered with a strong group of breeders to bring him home. And though we couldn’t get semen in time for the 2023 Spring breeding season, we held onto patience until 2024. We weren’t wasting another minute. Jeremy AI’d 27 cows to Force, and in the Spring of 2025, 21 Force calves hit the ground. The excitement built all Spring, gained steam through summer grazing, and by fall—when visitors came to look through the Force son’s and daughter’s out on pasture—we knew we’d finally hit the mark. A moment every purebred breeder dreams about.

The 2025 calf crop exceeded every expectation. From calving ease and structural quality to growth and eye appeal, the Force progeny have delivered in every phase. Visitor feedback this Fall confirmed it: we found the sire we set out to find.

The Most recent excitement came from the 2026 North Dakota State Angus Sale. We are grateful, thankful, and proud of the conversations we had with spectators and buyers alike around our 2 Force Female consignments with the final sale results of \$9,000 and \$8,500. Thank you to buyers Ray Haugen, Valley City, ND and Kenny Thomas, Velva, ND. We look forward to seeing how these females work within your programs!

CHESTNUT CAPTIVATION 958



DAM OF "FORCE"

AAA # 20744712

ELLINGSON PILOT 3102

DOB: 02.16.2023 • Bear Mtn Pilot 1520 x EA Bells Girl 1158
Weaning Wt.: 802 lbs • Yearling Wt.: 1416 lbs • Scanned: 14.5 REA with a 3.04% IMF

CE	BW	WW	YW	SC	HP	CEM	MILK	DOC	CLAW	ANGLE	CW	MARB	RE	FAT	\$M	\$W	\$F	\$G	\$B	\$C
4	1.1	91	162	1.31	14.0	8	20	26	0.23	0.35	78	0.80	0.84	0.069	89	83	129	58	188	333



In 2024, Dale attended the Ellingson Angus Production Sale, set out on finding a new herd sire that would find a good balance on the criteria he was looking for which is to continue on his operation in raising quiet, good footed, heavy cattle that will breed every year and having longevity, a lasting impact to his herd. Qualities he has instilled in his genetics and continues to enhance in that direction. Ellingson Pilot 3102, registration # 207447112, is the outcross needed in Dale's lineup. A son of Bear Mtn Pilot 1520, who was the \$40,000 top-selling bull out of the 2022 Bear Mtn Bull Sale in Nebraska, later that fall Pilot 1520's dam sold for \$49,000 to ZWT in Tennessee. You can find Bear Mtn Pilot 1520 in the Origen Beef line up.

To his dam's pedigree - the Bells Girl cow family is one of most prolific cow families in the Ellingson Angus lineup going back to the matriarch EA Bells Girl 2181, she is known as the "cornerstone Angus cow from Ellingson Angus" and is the dam to Ellingson Open Range.

Later, EA Bells Girl 2181 would be sold as a "pick of the herd" to Ingram Angus in 2020. What Dale found the most intriguing with Pilot 3102 himself was his balanced EPD profile. If you study his awesome EPD's he stacks up amongst the best for weaning and yearling weight, docility, foot quality, heifer pregnancy, marbling and ribeye. You will see a lot more of his offspring in the years to come on the Sprunk Angus operation and he is eager to calve out some of Pilot 3102's daughters.

BEAR MTN
PILOT 1520



SIRE OF PILOT 3102

EA
BELLS GIRL 2181



MATERNAL GREAT GRANDDAM OF PILOT 3102

F
E
A
T
U
R
E
D
S
P
R
U
N
K
H
E
R
D
S
I
R
E



REF. A **STELLPFLUG HOFFMAN RISEABOVE**
 AAA #: 20516965
 Tehama Tahoe B767
Hoffman Stagecoach 1908
 BSG Countess 1705 of 028
 Bar R Jet Black 5063
Hoffman 3210 Rita Lady 0256
 HA Rito Lady 3839
 Tehama Upward Y238
 Tehama Mary Blackbird Y684
 Connealy Capitalist 028
 BSG Countess 1501 of 547W
 Connealy Black granite
 Bar R Iris Anita 0113
 KG Solution 0018
 HA Rito Lady 0622

CE	BW	WW	YW	SC	HP	CEM	MILK	DOC	CLAW	ANGLE
4	1.4	94	147	1.12	14.3	5	18	20	0.46	0.34
CW	MARB	RE	FAT	\$M	\$W	\$F	\$G	\$B	\$C	
66	0.58	0.5	0.012	93	91	104	48	152	290	

RiseAbove was chosen for his consistency in added growth and extra muscle shape, depth of body and rib shape. He is out of Select Sires.



REF. B **EZAR STEP UP 9178**
 AAA #: 19430597
 G A R Sure Fire
G A R Big Step K715
 Chair Rock Prophet 3131
 EXAR Denver 2002B
Basin Lucy 4261
 Basin Lucy 1022
 Connealy In Sure 8524
 Chair Rock 5050 G A R 8086
 G A R Prophet
 Chair Rock 5050 G A R 9099
 EXAR Upshot 0562B
 Exar Royal Lass 1067
 Gardens Wave
 Basin Lucy 2625

CE	BW	WW	YW	SC	HP	CEM	MILK	DOC	CLAW	ANGLE
3	2.2	70	130	1.75	12.7	15	28	26	0.33	0.33
CW	MARB	RE	FAT	\$M	\$W	\$F	\$G	\$B	\$C	
50	1.34	0.93	0.05	78	64	97	87	185	318	

A Select Sire bull. We started using this sire for his ability to improve foot quality, docility and building good quality replacement females.

REF. C **EAR SILVER CREEK ENTICE H108**
 AAA #: 20201531
 SydGen Enhance
MOGCK Entice
 Mogck Erica 2255
 Plattermere Weigh Up K360
SilverCreekJodyWUPH507
 Silver Creek Jody 208 H802
 SydGen Exceed 3223
 SydGen Rita 2618
 Mogck Sure Shot 253
 Mogck Erica 2162
 Sitz Upward 307R
 Barbara of Plattermere 337
 Bon View New Design 208
 Silver Creek Jody GIM H632

CE	BW	WW	YW	SC	HP	CEM	MILK	DOC	CLAW	ANGLE
7	1.6	85	149	2.07	12.7	5	30	38	0.39	0.47
CW	MARB	RE	FAT	\$M	\$W	\$F	\$G	\$B	\$C	
63	0.86	0.61	-0.055	59	85	94	68	162	269	

Dale & Dana purchased this sire from our 2022 sale. He is a deep bodied, smooth shouldered bull that packs pounds and growth in his calves.

REF. D **CONNEALY JUSTIFIED 856A**
 AAA #: 20132394
 Connealy Judgment
KG Justified 3023
 KG Miss Magic 1443
 Connealy Gary
Enzanna of Conanga 856A
 Enza of Conanga 7517
 Connealy Consensus 7229
 Etrine of Conanga 9876
 Sitz Wisdom 481T
 KG Miss Magic 3528
 Connealy Niobrara 5451
 Hertha of Conanga 1639
 Plattermere Weigh Up K360
 Emmy of Conanga 4105

CE	BW	WW	YW	SC	HP	CEM	MILK	DOC	CLAW	ANGLE
3	1	88	155	1.63	11.4	8	18	27	0.47	0.51
CW	MARB	RE	FAT	\$M	\$W	\$F	\$G	\$B	\$C	
67	0.68	0.55	-0.008	58	76	123	55	178	289	

A bull from Connealy Angus that was used for his quality foot and leg structure, length, and stoutness along with calving ease!

REF. E **BIGK/WSC IRON HORSE 025F**
 AAA #: 19415015
 EXAR Stud 4658B
EXAR Stallion 7986
 EXAR Blackcap 3385
 SandPoint Butkus X797
EXAR Henrietta Pride 5702
 Sitz Henrietta Pride 643T
 A A R Ten X7008 SA
 BoBo Rita 1559
 Connealy Impression
 EXAR Blackcap 5509
 S A V Final Answer 0035
 G A R Gridmaker 4603
 Connealy Onward
 Sitz Henrietta Pride 81M

CE	BW	WW	YW	SC	HP	CEM	MILK	DOC	CLAW	ANGLE
11	0.9	88	157	1.11	9.2	15	26	29	0.51	0.43
CW	MARB	RE	FAT	\$M	\$W	\$F	\$G	\$B	\$C	
67	0.77	1.28	-0.047	66	85	120	71	192	315	

Iron Horse is a complete made bull, being fleshy and deep bodied attractively made bull out of Select Sires.

REF. F **SR SOUTH ARMSTRONG 3293**
 AAA #: 20796073
 S Architech 9501
S Armstrong
 S Queen Essa 7149
 Young Dale Xclusive 25X
U2 Erelite 109Z
 U-2 Erelite 1X
 SydGen Blueprint
 S Blossom 7514
 S Foundation 514
 S Queen Essa 960
 Young Dale Knock Out 134U
 Young Dale Pollyanna 60T
 S A V Final Answer 0035
 U-2 Erelite 8109U

CE	BW	WW	YW	SC	HP	CEM	MILK	DOC	CLAW	ANGLE
2	3.1	83	144	0.33	13.8	-2	31	20	0.36	0.37
CW	MARB	RE	FAT	\$M	\$W	\$F	\$G	\$B	\$C	
76	-0.08	0.83	0.004	80	82	117	20	138	259	

A calf Dale & Dana purchased out of the 2024 Spickler Ranch South sale as a herd bull prospect with great phenotype and performance along with a solid foot structure!

REF. G **MILLARS DUKE 816**
AAA #: 19343216

B Bar Windy 79
B Bar Windy 7 3575
B Bar Eulima 357

Tombstone 050
Millars Queen Lass 5273
Millars Queen Lass 3276

Crook Mt Really Windy 141
B Bar Lady Jewel 116
B Bar Rainmaker 9601
B Bar Eulima 970

Sitz Upward 307R
Mytty Countess 906
V D A R Really Windy 4097
Millars Queen Lass 8276

CE	BW	WW	YW	SC	HP	CEM	MILK	DOC	CLAW	ANGLE
5	-0.8	80	130	1.22	12.1	-1	30	20	0.42	0.52
CW	MARB	RE	FAT	\$M	\$W	\$F	\$G	\$B	\$C	
52	0.18	0.31	0.053	59	89	100	23	123	219	

A sire out of Cattle Visions that was chosen not only for the Maternal Traits his pedigree offers but also his growth traits as well.



REF. H **DEEP CREEK SQUARE DEAL**
AAA #: 20509700

Woodhill Blueprint
Myers Fair-N-Square M39
Myers Miss Beauty M136

RBM Step Ahead C80
Deep Creek Step Lass 064
Deep Creek Total Lass 701

Connealy Confidence Plus
Woodhill Evergreen Z291-B233
Connealy Thunder
Myers Miss Beauty M476

Prairie Pride Next Step 2036
Basin Charisma U691
KCF Bennett Total
Deep Creek 193 Lass 516



CE	BW	WW	YW	SC	HP	CEM	MILK	DOC	CLAW	ANGLE
7	0.8	80	137	1.43	14.1	8	29	24	0.34	0.36
CW	MARB	RE	FAT	\$M	\$W	\$F	\$G	\$B	\$C	
62	1	0.73	0.048	102	86	110	68	179	334	

A sire that is so strong Maternally with many generations of Pathfinders, this is why we chose Square Deal, to continue to build our program around strong females.



REF. I **BASIN JAMESON 1076**
AAA #: 20071781

Basin Advance 3134
Basin Deposit 6249
Basin Lucy 4288

EXAR Monumental 6056B
Basin Joy 9140
Basin Joy 5367

GAR Progress
Basin O Lass 1663
EXAR Denver 2002B
Basin Lucy 1037

3F Epic 4631
FWY 7008 of C085 4029
Basin Rainmaker P175
Basin Joy 1036



CE	BW	WW	YW	SC	HP	CEM	MILK	DOC	CLAW	ANGLE
8	2.3	107	168	0.83	10.3	10	29	21	0.34	0.32
CW	MARB	RE	FAT	\$M	\$W	\$F	\$G	\$B	\$C	
90	1.71	0.87	0.018	81	112	106	107	213	357	

Another sire that combines performance, foot quality, and maternal traits all in one. Found with ABS Global

REF. J **LAR MAN IN BLACK**
AAA #: 19955191

Connealy Black Granite
Bar R Jet Black 5063
Bar R Iris Anita 0113

Sitz Top Game 561X
JMB Maxine TG 2131
JMB Maxine Deluxe 9034

Connealy Consensus 7229
Eura Elga of Conanga 9109
Sitz Upward 307R
Bar R Anita 7081

GDAR Game Day 449
Sitz Pride 881
Stevenson CE Deluxe 1914
JMB Maxine 720



CE	BW	WW	YW	SC	HP	CEM	MILK	DOC	CLAW	ANGLE
8	3.1	92	158	1.63	13.6	10	29	20	0.45	0.04
CW	MARB	RE	FAT	\$M	\$W	\$F	\$G	\$B	\$C	
78	1.07	0.81	0.044	79	97	108	73	182	315	

An ABS Global sire we chose for his performance, rib shape and length of body. Along with his balanced EPD profile.

REF. K **CONNEALY COURAGE 25L**
AAA #: 17302304

Connealy Tobin
Connealy Confidence 010
Becka Gala of Conanga 8281

Vermilion Dateline 7078
Pearl Pamy of Conanga 194
Pearl Jam of Conanga 6114

Bon View New Design 208
Delia of Conanga 667
Connealy Thunder
Becka Lee of Conanga 37

Connealy Dateline
Vermilion Blackbird 5044
Stevenson Royce 741C
Prides Stacker Conanga 6226

CE	BW	WW	YW	SC	HP	CEM	MILK	DOC	CLAW	ANGLE
15	0	54	94	0.12	8.8	13	28	18	0.56	0.49
CW	MARB	RE	FAT	\$M	\$W	\$F	\$G	\$B	\$C	
27	0.32	0.89	0.019	66	70	69	39	108	206	

We had to bring back out Connealy Courage 25L. He had been one of the most consistent bulls we have used, everytime you were in a pasture you said, "yep that's a Courage calf". Eye Appeal and Consistency.

REF. L **E&B RIVAL 175**
AAA #: 20128929

Basin Payweight 1682
Deer Valley Growth Fund
Deer Valley Rita 36113

Connealy Confidence Plus
E&B Lady Plus 8180
E&B Lady Primestar 086

Basin Payweight 0006S
21AR O Lass 7017
Plattmere Weigh Up K360
Deer Valley Rita 9457

Connealy Confidence 0100
Elbanna of Conanga 1209
Gardens Prime Star
E&B Lady Power Alliance 339



CE	BW	WW	YW	SC	HP	CEM	MILK	DOC	CLAW	ANGLE
6	2.8	87	155	0.38	14.3	5	29	13	0.39	0.37
CW	MARB	RE	FAT	\$M	\$W	\$F	\$G	\$B	\$C	
74	1.09	1.01	0.038	74	82	115	77	192	323	

Another Select Sires bull that was chosen for his Carcass traits and balanced EPD profile. He scanned 8.39 IMF and 16.9 REA.



LOT 101

LOT 101 **SPR A RISEABOVE 52**

BD: 1/24/2025 | AAA #: 21414253 | TATTOO: 52 | ACT. BW: 79 | ADJ. 205: 871

Stellpflug Hoffman RiseAbove
 Hoffman Stagecoach 1908
 Hoffman 3210 Rita Lady 0256
 S Coalition 0256
HAF Lass 3047
 HAF Lass 015 *Pathfinder*

Tehama Tahoe B767
 BSG Countess 1705 of 028
 Bar R Jet Black 5063
 HA Rito Lady 3839
 U-2 Coalition 206C
 S Cora 5290
 EZAR Gold Rush 6001
 HAF KH Lass 3192

	CE	BW	WW	YW	SC	HP	CEM	MILK	DOC	CLAW	ANGLE
% EPDS	10	0.7	87	141	0.04	13.3	12	28	23	0.49	0.39
	20	40	10	20	95	25	15	40	35	55	15
	CW	MARB	RE	FAT	SM	SW	SF	SG	SB	SC	
% EPDS	71	0.59	0.87	0.039	98	98	110	51	161	307	
	20	65	30	75	4	3	25	60	40	25	



LOT 101 Pictured Fall 2025

A powerful Rise Above son with a quiet disposition. He is extra deep, with a thick top, and wide butted. He has excellent performance and ratioed 108 at weaning. His WW and YW are in the top 10 and 20% and still has a CED number in the top 20%. All his \$ Values are excellent. He has a catch your eye look and is suitable for heifers.



LOT 102

A son of the popular Craftsman sire. Weaning weight of 848 earned him a weaning ratio of 105. His weaning and yearling weights are both in the top 10%, with a Milk EPD in the top 5%. An excellent Pathfinder dam with a production record like this 4@98 for BW, 4@106 for WW, and 2@102 for ribeye. Take a look at his \$ values; they are all in the top 25% of the Angus breed. He has a maternal brother working for Jordan Anderson.

LOT 102 **SPR A CRAFTSMAN 59**

BD: 1/29/2025 | AAA #: 21413643 | TATTOO: 59 | ACT. BW: 78 | ADJ. 205: 848

Sitz Resilient 10208
Connealy Craftsman
Black Cathy of Conanga 8521

Sitz Stellar 726D
Sitz Miss Burgess 1856
Connealy Niobrara 5451
Black Carla of Conanga 450
KM Broken Bow 002
Casino Annie K48 *Pathfinder*
SF Speedway A187
CW 335 Trojan Erica 671



Casino Bomber N33
KFL Erica 808 006 *Pathfinder*
KFL Speedy Erica 808

% EPDs	CE	BW	WW	YW	SC	HP	CEM	MILK	DOC	CLAW	ANGLE
	6	1.5	89	155	0.98	9.1	7	37	21	0.48	0.44
	55	55	10	10	45	90	65	3	45	50	35
% EPDs	CW	MARB	RE	FAT	\$M	\$W	\$F	\$G	\$B	\$C	
	70	0.84	1.03	-0.011	81	108	107	69	176	309	
	20	40	15	20	20	1	30	25	25	20	

LOT 103 **SPR A PILOT 562**

BD: 2/18/2025 | AAA #: 21413646 | TATTOO: 562 | ACT. BW: 76 | ADJ. 205: 846

Bear Mtn Pilot 1520
Ellingson Pilot 3102
EA Bells Girl 1158

Tehama Patriarch F028
Bear Mtn Judy 6535
Ellingson Profound 8155
EA Bells Girl 4183

Deer Valley Growth Fund
Spr A 457 Princess 251
Spr A Princess 457

Basin Payweight 1682
Deer Valley Rita 36113
Hylina Right Time 338
EA Princess 028

% EPDs	CE	BW	WW	YW	SC	HP	CEM	MILK	DOC	CLAW	ANGLE
	6	0	90	158	0.56	14	14	18	27	0.28	0.36
	55	25	10	5	75	20	5	95	15	2	10
% EPDs	CW	MARB	RE	FAT	\$M	\$W	\$F	\$G	\$B	\$C	
	78	0.71	0.61	0.074	82	81	129	51	180	315	
	10	55	65	95	20	20	5	60	25	20	

LOT 103

This bull is a son of the Pilot 3102 sire. He weighed 846 lbs at weaning for a ratio of 106. If you look at all of his EPD's, they are very balanced. He is calving ease with a ton of performance. Fourteen EPD's are in the top 20% or better of the breed. He likes to be scratched and is excellent footed.



LOT 103 Pictured Fall 2025



LOT 105

LOT 104 SPR A ARMSTRONG 540

BD: 2/6/2025 | AAA #: 21414518 | TATTOO: 540 | ACT. BW: 83 | ADJ. 205: 836

S Armstrong

S Architect 9501
S Queen Essa 7149

SydGen Blueprint
S Blossom 7514
S Foundation 514
S Queen Essa 960



Ellingson Homestead 6030
Spr A 135 Burgette 982
Spr A Burgette 135 *Pathfinder*

CTS Remedy T101
EA Erica 1082
Tehama Blackcap Revolution
Farview Burgette 3295

% EPDs		CE	BW	WW	YW	SC	HP	CEM	MILK	DOC	CLAW	ANGLE
		11	-0.1	81	136	1.97	15	12	33	20	0.48	0.47
		15	25	20	25	4	10	15	15	50	50	50
% EPDs		CW	MARB	RE	FAT	\$M	\$W	\$F	\$G	\$B	\$C	
		74	0.73	1.18	0.02	96	94	119	63	183	333	
		15	50	10	50	5	4	15	35	20	10	

An Armstrong son that is a powerful calving ease bull. His birth EPD's say very calving ease and his growth EPD's say powerful. A bull with a very balanced set of EPDs with 12 of his EPD's being in the top 15% or better. He pushed the scale down hard enough to ratio 105 at weaning.

LOT 105 SPR A ARMSTRONG 554

BD: 2/10/2025 | AAA #: 21414501 | TATTOO: 554 | ACT. BW: 78 | ADJ. 205: 901

S Armstrong

S Architect 9501
S Queen Essa 7149

SydGen Blueprint
S Blossom 7514
S Foundation 514
S Queen Essa 960



EAR Silver Creek Treasure H023
AAR Lucy 361
AAR Lucy 120

Connealy Treasure 5688
SilverCreekSSAFBarbCourH506 *Pathfinder*
SAV America 8018
AAR Lucy 716 *Pathfinder*

% EPDs		CE	BW	WW	YW	SC	HP	CEM	MILK	DOC	CLAW	ANGLE
		6	2.3	98	160	1.47	13.3	13	25	25	0.47	0.46
		55	75	2	5	20	25	10	60	25	45	45
% EPDs		CW	MARB	RE	FAT	\$M	\$W	\$F	\$G	\$B	\$C	
		84	0.65	0.84	-0.001	94	100	122	56	179	326	
		4	60	35	30	10	2	10	50	25	15	

This Armstrong son has done an excellent job. He is my heaviest calf of this calf crop at weaning. He ratioed 112 for weaning and has the biggest weaning EPD of my bulls. All his \$ Values are in the top 25% except his \$G. His dam's record looks like this 1@108 BW, 1@112 WW. His WW and YW are in the top 2 and 5% respectively.

LOT 106 SPR A PILOT 541

BD: 2/6/2025 | AAA #: 21413644 | TATTOO: 541 | ACT. BW: 62 | ADJ. 205: 810

Ellingson Pilot 3102

Bear Mtn Pilot 1520
EA Bells Girl 1158

Tehama Patriarch F028
Bear Mtn Judy 6535
Ellingson Profound 8155
EA Bells Girl 4183



Wilks Regiment 9035
Spr A 014 Eliminator 214
Spr A 853 Eliminator 014 *Pathfinder*

WAR Cavalry B063 Z044
Vintage Chloe 6137
GAR Sure Fire
Spr A 4180 Eliminator 853

% EPDs		CE	BW	WW	YW	SC	HP	CEM	MILK	DOC	CLAW	ANGLE
		0	3	96	165	1.56	13.3	3	25	35	0.27	0.37
		90	85	2	3	15	25	90	60	1	1	10
% EPDs		CW	MARB	RE	FAT	\$M	\$W	\$F	\$G	\$B	\$C	
		80	0.73	1.13	0.015	82	90	123	63	186	323	
		10	50	10	45	20	10	10	35	20	15	

A son out of the first calf crop of Ellingson Pilot 3102. This sire you are going to get to see a lot of. He does a lot of things right, and we are excited to see his daughters in production. This bull has EPD's for weaning and yearling weight in the top 2 and 3% of the Angus breed. He is quiet and excellent footed. All of his \$ Values are in the top 20% except one. This bull is a twin his brother died at birth. The granddam is a Pathfinder and this dam is headed the same way.

LOT 107 SPR A PILOT 573

BD: 3/2/2025 | AAA #: 21413649 | TATTOO: 573 | ACT. BW: 74 | ADJ. 205: 858

Ellingson Pilot 3102

Bear Mtn Pilot 1520
EA Bells Girl 1158

Tehama Patriarch F028
Bear Mtn Judy 6535
Ellingson Profound 8155
EA Bells Girl 4183



MOGCK Entice
Spr A 511 Dora 226
Spr A 641 Dora 511 *Pathfinder*

SydGen Enhance
MOGCK Erica 2255 *Pathfinder*
Ellingson Dominance 2079
SAV Dora 8336

% EPDs		CE	BW	WW	YW	SC	HP	CEM	MILK	DOC	CLAW	ANGLE
		3	2.7	92	173	1.84	11.4	2	30	32	0.3	0.41
		75	80	4	1	5	55	95	25	3	3	20
% EPDs		CW	MARB	RE	FAT	\$M	\$W	\$F	\$G	\$B	\$C	
		88	1.04	0.98	0.029	54	86	131	75	207	322	
		3	25	20	60	80	15	5	20	10	15	

This Pilot son is a power-wagon with growth EPD's in the top 4% and top 1%. He has WW, YW, RADG, YH, SC, MW, MH, Doc, Claw, CW, \$F and \$B EPD's all in the top 10% or better of the Angus breed. Look at his genomic ranking also, it says the same thing. Docility in the top 3% and he is excellent footed. He has a twin brother 574 who is also as good along with a sister in the bred heifer pen. This guy ratioed 108 at weaning.



LOT 109 Pictured Fall 2025



LOT 109

LOT 108

SPR A PILOT 574

BD: 3/2/2025 | AAA #: 21413650 | TATTOO: 574 | ACT. BW: 67 | ADJ. 205: 803

Ellingson Pilot 3102
Bear Mtn Pilot 1520
EA Bells Girl 1158

Spr A 511Dora 226
MOGCK Entice
Spr A 641Dora 511 *Pathfinder*

Tehama Patriarch F028
Bear Mtn Judy 6535
Ellingson Profound 8155
EA Bells Girl 4183
SydGen Enhance
MOGCK Erica 2255 *Pathfinder*
Ellingson Dominance 2079
SA V Dora 8336



% EPDs	CE	BW	WW	YW	SC	HP	CEM	MILK	DOC	CLAW	ANGLE
		-3	2.1	92	156	1.84	14.1	1	21	32	0.31
	95	70	4	10	5	15	95	85	3	3	15
% EPDs	CW	MARB	RE	FAT	\$M	\$W	\$F	\$G	\$B	\$C	
	70	0.96	0.69	0.003	76	85	107	69	176	304	
	20	30	55	30	30	15	30	25	25	25	

This powerhouse Pilot 3102 son is a full brother to 573. They both are excellent in their kind. He is excellent footed and quiet having a Doc EPD of 32 puts him in the top 3%. He ratioed 101 at weaning time. With WW and YW EPD's in the top 4 and 10%. Out of a cow that is making an excellent start with 3@100 BW and 3 @109 WW. He has an excellent set of balanced EPD's.

LOT 109

SPR A 816 DUKE 536

BD: 2/4/2025 | AAA #: 21420643 | TATTOO: 536 | ACT. BW: 74 | ADJ. 205: 871

Millars Duke 816
B Bar Windy 73575
Millars Queen Lass 5273

Spr A 04 Ava Lee 363
S Coalition 003
Spr A 6115 Ava Lee 04

B Bar Windy 79
B Bar Eulima 357
Tombstone 050
Millars Queen Lass 3276
U-2 Coalition 206C
S Gloria 1146
TEX Playbook 5437
JAR Ava Lee 8100 6115 *Pathfinder*

% EPDs	CE	BW	WW	YW	SC	HP	CEM	MILK	DOC	CLAW	ANGLE
		0	2.4	83	140	0.89	13.4	11	31	22	0.49
	90	75	15	20	50	25	25	20	40	55	25
% EPDs	CW	MARB	RE	FAT	\$M	\$W	\$F	\$G	\$B	\$C	
	60	0.49	0.41	0.008	87	87	95	42	138	266	
	40	75	85	40	15	10	50	75	70	50	

This Millars Duke son was the 4th heaviest weaning calf for a ratio of 108. Powerful WW and YW EPDs being ranked in the top 15 and 20% respectively. He has some excellent maternal power on his bottom side with Coalition and Playbook. His \$M and \$W are excellent.

LOT 110

SPR A GROWTH FUND 523

BD: 2/2/2025 | AAA #: 21417218 | TATTOO: 523 | ACT. BW: 79 | ADJ. 205: 819

Deer Valley Growth Fund
Basin Payweight 1682
Deer Valley Rita 36113

V&B 55 Bando Stock 72
CTS Remedy T101
V&B 218 Bando Stock 55

Basin Payweight 006S
21AR O Lass 7017
Plattmere Weigh Up K360
Deer Valley Rita 9457
Connealy Thunder
CTS 7V03 Bellemere Maid 9T02
SPR Final Answer 237
Spr A Bando Stock 218



% EPDs	CE	BW	WW	YW	SC	HP	CEM	MILK	DOC	CLAW	ANGLE
		3	1.5	79	134	0.57	15.1	9	26	16	0.45
	75	55	25	30	75	10	40	50	70	35	40
% EPDs	CW	MARB	RE	FAT	\$M	\$W	\$F	\$G	\$B	\$C	
	65	0.68	0.83	0.018	76	81	108	56	165	290	
	30	55	35	50	30	20	25	50	40	35	

The only Growth Fund bull in my offering. He is calving ease with enough performance to break the 800lb barrier at weaning for a ratio of 106. His Remedy dam has a record of 2@100 for BW and 2@103 for WW. This bulls HP EPD is the highest in my offering.

LOT 111

SPR A RISE ABOVE 528

BD: 2/3/2025 | AAA #: 21420958 | TATTOO: 528 | ACT. BW: 71 | ADJ. 205: 818

Stellpflug Hoffman RiseAbove
Hoffman Stagecoach 1908
Hoffman 3210 Rita Lady 0256

EAR Miss SD E509
Mohren South Dakota 402
Ear Miss Rainmaker E202

Tehama Tahoe B767
BSG Countess 1705 of 028
Bar R Jet Black 5063
HA Rita Lady 3839
Mohren Density 730
Mohren Jilt 539
Basin Rainmaker 814Z
Ear Destination E005 *Pathfinder*



% EPDs	CE	BW	WW	YW	SC	HP	CEM	MILK	DOC	CLAW	ANGLE
		10	0.6	83	128	0.54	13.2	9	31	15	0.63
	20	35	15	40	75	30	40	20	75	95	55
% EPDs	CW	MARB	RE	FAT	\$M	\$W	\$F	\$G	\$B	\$C	
	49	0.71	0.84	0.021	67	95	77	58	135	242	
	70	55	35	50	50	4	85	45	75	75	

This son of Rise Above broke the 800 lb barrier at weaning for a ratio of 100 at weaning. Dam's production is 9@96 for birth, 8@104 for weaning, 2@108 for yearling and 2@103 for marbling and 2@106 for ribeye. He is suitable for heifers.



SPR A 0440 MADAME PRIDE562 Dam of Lot 113



LOT 113 Pictured Fall 2025

LOT 112 SPR A RISEABOVE 535

BD: 2/4/2025 | AAA #: 21414539 | TATTOO: 535 | ACT. BW: 87 | ADJ. 205: 846

Hoffman Stagecoach 1908
Stellflug Hoffman RiseAbove
Hoffman 3210 Rita Lady 0256

Tehama Tahoe B767
BSG Countess 1705 of 028
Bar R Jet Black 5063
HA Rito Lady 3839
SAV Recharge 3436
AAR Ideal Pride 079
Ellingson Territory 1154
Spr A Chloe 255

AAR Recharge 620
AAR Chloe 085
Spr A 255 Chloe 575

	CE	BW	WW	YW	SC	HP	CEM	MILK	DOC	CLAW	ANGLE
% EPDs	0	3.8	90	150	1.25	10.8	4	18	7	0.47	0.49
	90	95	10	10	30	65	85	95	95	45	60
	CW	MARB	RE	FAT	\$M	\$W	\$F	\$G	\$B	\$C	
% EPDs	68	0.15	0.82	-0.002	48	72	109	32	141	231	
	25	95	35	25	90	35	25	95	65	80	

A son out of the popular Rise Above. He will be a larger framed bull with a lot of power. With his WW EPD being in the top 10% along with his YW EPD being in the top 10%. He weaned off at 846 lbs putting his ratio at a 105. His dam's production record looks like this BW 2@104, WW 2@103, YW 1@100, Marbling 1@100, and Ribeye 1@100.

LOT 113 SPR A TITAN 51

BD: 12/2/2024 | AAA #: 21413642 | TATTOO: 51 | ACT. BW: 72 | ADJ. 205: 878

JSAR Titan
S Titan 1572

SSelena 201

SAV Resource 1441

Spr A 0440 Madame Pride562 *Pathfinder*
YT Madame Pride 0440

JSAR Mr Rodman 39HKR
JSAR Blk Future Direct 201RT
SSummit 956
SSelena 0418
Rito 707 of Ideal 3407 7075
SAV Blackcap May 4136
Connealy Thunder
SAV Madame Pride 2330

	CE	BW	WW	YW	SC	HP	CEM	MILK	DOC	CLAW	ANGLE
% EPDs	5	2.3	82	141	0.54	12.3	3	31	21	0.38	0.42
	60	75	20	20	75	40	90	20	45	15	25
	CW	MARB	RE	FAT	\$M	\$W	\$F	\$G	\$B	\$C	
% EPDs	73	0.06	1.38	-0.006	78	86	119	34	154	278	
	15	95	2	25	25	15	15	90	50	40	

A son of S Titan 1572, he will be an outcross to many bloodlines. He is a big bodied, added depth kind of bull. His dam Madame Pride 562 is in the donor pen, her track record looks like this: 8@105 BW, 7@104 WW, 5@106 YW, 4@114 Marbling, 4@112 Ribeye. Maternal brothers are working for Hoffmann Angus Farm, Mike & Ryan Hough and Scott Bennett.

LOT 114 SPR A 816 DUKE 549

BD: 2/8/2025 | AAA #: 21420954 | TATTOO: 549 | ACT. BW: 83 | ADJ. 205: 878

B Bar Windy 73575
Millars Duke 816
Millars Queen Lass 5273

B Bar Windy 79
B Bar Eulima 357
Tombstone 050
Millars Queen Lass 3276
Hoover Dam
Jet SX144
Ellingson Territory 1154
Spr A Rosetta 29 *Pathfinder*

SS Niagara Z29
Spr A 557 Rosetta 94
Spr A 29 Rosetta 557

	CE	BW	WW	YW	SC	HP	CEM	MILK	DOC	CLAW	ANGLE
% EPDs	3	0.7	92	153	0.27	9.4	5	35	21	0.41	0.55
	75	40	4	10	90	85	80	10	45	25	90
	CW	MARB	RE	FAT	\$M	\$W	\$F	\$G	\$B	\$C	
% EPDs	69	0.47	0.8	0.029	56	102	103	45	148	248	
	20	80	40	60	75	1	35	70	60	70	

This Duke son was the second heaviest calf at weaning at 878 lbs for a ratio of 110. He is a thick and deep made bull that carries all the way through into his rear quarter. He has excellent WW and YW EPDs. His genomic rankings for performance are hard to beat. His dam is out of the high performing Rosetta cow family having 5@105 BW, 5@103 WW and 2@105 YW.

LOT 115 SPR A 816 DUKE 519

BD: 1/31/2025 | AAA #: 21420798 | TATTOO: 519 | ACT. BW: 72 | ADJ. 205: 773

B Bar Windy 73575
Millars Duke 816
Millars Queen Lass 5273

B Bar Windy 79
B Bar Eulima 357
Tombstone 050
Millars Queen Lass 3276
SSummit 956
SQueen Essa 208 *Pathfinder*
Tehama Blackcap Revolution
Farview Burgette 3295

Spr A Summit 349
Spr A 135 Burgette 9168
Spr A Burgette 135 *Pathfinder*

	CE	BW	WW	YW	SC	HP	CEM	MILK	DOC	CLAW	ANGLE
% EPDs	2	1.7	83	126	1.38	14.8	6	30	16	0.52	0.45
	85	60	15	45	20	10	70	25	70	65	40
	CW	MARB	RE	FAT	\$M	\$W	\$F	\$G	\$B	\$C	
% EPDs	58	0.59	0.37	0.068	76	91	90	42	133	249	
	45	65	90	95	30	10	60	75	75	65	

A calving ease son of Duke 816 out of the Burgette cow family. Granddam 135 is a Pathfinder in the donor pen. Dam has 3@95 for birth, 3@97 for weaning and 1@97 for yearling. He is suitable for heifers.

LOT 116 SPR A STEP UP 547

BD: 2/7/2025 | AAA #: 21414521 | TATTOO: 547 | ACT. BW: 86 | ADJ. 205: 810

G A R Big Step K715
EZAR Step Up 9178
Basin Lucy 4261

G A R Sure Fire
Chair Rock Prophet 3131
EXAR Denver 2002B
Basin Lucy 1022
CTS Remedy 1T01
EA Erica 1082
Hyline Right Time 338
EA Princess 028



Ellingson Homestead 6030
Spr A 457 Princess 030
Spr A Princess 457

	CE	BW	WW	YW	SC	HP	CEM	MILK	DOC	CLAW	ANGLE
% EPDs	0	4.3	80	149	0.85	13.7	10	37	25	0.46	0.46
% EPDs	90	95	20	15	55	20	30	3	25	40	45
	CW	MARB	RE	FAT	\$M	\$W	\$F	\$G	\$B	\$C	
% EPDs	67	0.81	0.92	0.041	62	75	109	62	172	285	
% EPDs	25	45	25	75	60	30	25	35	30	35	

547 is a powerful son of Step Up 9178. He has a balanced set of EPDs that has earned him the CAB Stamp as well. WW, YW and Milk EPDs are excellent. He is quiet and long spined. He ratioed 102 at weaning and his dam's production looks like this 4@104 for weaning and 2@106 for yearling. A maternal brother is working for Richard Reinke.

LOT 118 SPR A ENTICE 566

BD: 2/21/2025 | AAA #: 21413647 | TATTOO: 566 | ACT. BW: 69 | ADJ. 205: 686

MOGCK Entice
Ear Silver Creek Entice H108
SilverCreekJodyWUpH507

SydGen Enhance
MOGCK Erica 2255
Plattmere Weigh Up K360
SilverCreekJody 208 H802
Basin Payweight 1682
Deer Valley Rita 36113
SA V Resource 1441
YT Madame Pride 0440

Deer Valley Growth Fund
Spr A 562 Madame Pride 041 *Pathfinder*
Spr A 0440 Madame Pride 562 *Pathfinder*

	CE	BW	WW	YW	SC	HP	CEM	MILK	DOC	CLAW	ANGLE
% EPDs	14	-0.8	79	141	1.06	15.2	13	34	26	0.32	0.48
% EPDs	4	15	25	20	40	10	10	10	20	4	55
	CW	MARB	RE	FAT	\$M	\$W	\$F	\$G	\$B	\$C	
% EPDs	62	0.61	1.05	0.001	88	90	99	57	157	292	
% EPDs	35	65	15	30	15	10	45	45	45	30	

An Entice son that has the highest CED in my offering and has the lowest BW EPD. He also has the highest HP EPD of my bulls. He is very balanced with a smooth look. His dams production record: 4@97 BW, 4@100 WW, 3@105 YW, 3@123 for marbling and 3@104 for ribeye. This dam has offspring working for Bartholomay Kattle Company and Ben & Beci Lambrecht. He is suitable for heifers.

LOT 120 SPR A 816 DUKE 548

BD: 2/7/2025 | AAA #: 21420957 | TATTOO: 548 | ACT. BW: 71 | ADJ. 205: 665

B Bar Windy 73575
Millars Duke 816
Millars Queen Lass 5273

B Bar Windy 79
B Bar Eulima 357
Tombstone 050
Millars Queen Lass 3276
LT Territory 5824 of EA
SAV Blackclass 374
Tehama Blackcap Revolution
Farview Burgette 3295

Ellingson Dominance 2079
Spr A 135 Burgette 567
Spr A Burgette 135 *Pathfinder*

	CE	BW	WW	YW	SC	HP	CEM	MILK	DOC	CLAW	ANGLE
% EPDs	0	2.9	89	141	0.68	10	5	25	20	0.52	0.43
% EPDs	90	85	10	20	65	80	80	60	50	65	30
	CW	MARB	RE	FAT	\$M	\$W	\$F	\$G	\$B	\$C	
% EPDs	60	0.24	0.52	0.005	64	85	90	32	123	224	
% EPDs	40	95	75	35	55	15	60	95	85	85	

A Millars Duke son out of the Burgette cow family. The dam of this bull is a big massive cow. The granddam is a donor and a Pathfinder. His WW and YW along with his Genomic rankings say he will raise some stout heavy calves. He will be a bigger framed bull.

LOT 117 SPR A 816 DUKE 553

BD: 2/9/2025 | AAA #: 21420592 | TATTOO: 553 | ACT. BW: 74 | ADJ. 205: 853

B Bar Windy 73575
Millars Duke 816

B Bar Windy 79
B Bar Eulima 357
Tombstone 050
Millars Queen Lass 3276
Bar R Jet Black 5063
HA Rito Lady 3839 *Pathfinder*
Connealy Earman 076E
EA Queen Dolly 7813

Millars Queen Lass 5273
Hoffman Thedford
Spr A 694 Queen Dolly 351
Spr A Queen Dolly 694

	CE	BW	WW	YW	SC	HP	CEM	MILK	DOC	CLAW	ANGLE
% EPDs	4	1.8	84	136	2.54	11.8	2	41	20	0.41	0.37
% EPDs	70	65	15	25	1	50	95	1	50	25	10
	CW	MARB	RE	FAT	\$M	\$W	\$F	\$G	\$B	\$C	
% EPDs	69	0.28	0.53	-0.001	86	105	105	34	140	268	
% EPDs	20	90	75	30	15	1	30	90	70	50	

Another Duke son that has the highest scrotal and the highest Milk EPD in my offering. He weighed 853 lbs at weaning for a 106 ratio. He is excellent footed with high ranking EPD's and genomic rankings. His \$M and \$W are in the top 15% and 1% respectively. Dam as 1@103 BW and 1@106 WW.

LOT 119 SPR A STEP UP 543

BD: 2/6/2025 | AAA #: 21414524 | TATTOO: 543 | ACT. BW: 77 | ADJ. 205: 617

G A R Big Step K715
EZAR Step Up 9178
Basin Lucy 4261

G A R Sure Fire
Chair Rock Prophet 3131
EXAR Denver 2002B
Basin Lucy 1022
Connealy Earman 076E
EA Blackbird 1203
Ellingson Plateau 1155
SA Ester's 6106 *Pathfinder*

Ellingson Commanche 3119
Spr A 363 Ester's 624
Spr A Ester's 363 *Pathfinder*

	CE	BW	WW	YW	SC	HP	CEM	MILK	DOC	CLAW	ANGLE
% EPDs	9	-0.5	52	94	1.14	7.9	14	29	19	0.29	0.38
% EPDs	30	20	90	90	35	95	5	30	55	2	15
	CW	MARB	RE	FAT	\$M	\$W	\$F	\$G	\$B	\$C	
% EPDs	25	1.25	0.25	0.035	75	55	67	76	143	260	
% EPDs	95	15	95	70	30	75	95	20	65	60	

A son by Step Up 9178 he is excellent calving ease where is genomic rankings rank him for CED and BW at 3% and 2%. If you want added marbling this guy is the top Marbling EPD bull in my offering. Dam is 8@97 for BW and 8@99 for WW. Suitable for heifers.

ANGUS \$VALUE INDEXES

You may have noticed we've added some more EPDs and \$Value Indexes to the catalog this year. These are EPDs and data we think are important to our customers to consider when making selection decisions for your next herd bull.



Want the full run-down on understanding and evaluating Angus \$Value Indexes? Scan the QR code to learn more!

LOT 121

SPR A ENTICE 568

BD: 2/23/2025 | AAA #: 21413648 | TATTOO: 568 | ACT. BW: 76 | ADJ. 205: 711

MOGCK Entice
Ear Silver Creek Entice H108
SilverCreekJodyWUpH507

GAR Sure Fire
Spr A 853 Eliminator 014 *Pathfinder*
Spr A 4180 Eliminator 853

SydGen Enhance
MOGCK Erica 2255
Plattmere Weigh Up K360
SilverCreekJody208 H802
Connealy In Sure 8524
Chair Rock 5050 GAR 8086
Brun's Blaster
JAR Eliminator 142.4180 *Pathfinder*



		CE	BW	WW	YW	SC	HP	CEM	MILK	DOC	CLAW	ANGLE
% EPDS		7	2.1	77	142	1.59	9.7	3	26	25	0.43	0.43
		45	70	30	20	15	80	90	50	25	30	30
		CW	MARB	RE	FAT	SM	SW	SF	SG	SB	SC	
% EPDS		71	0.94	0.57	0.022	64	71	114	65	179	296	
		20	35	70	55	55	40	20	35	25	30	

This Entice son comes from a long line of Pathfinders having 9 in his background. His Pathfinder dam comes from the Eliminator cow family that has done a great job. She has a daughter in my bred heifer pen. He is a quiet bull that is excellent footed. Dam has another son working at Jordan Anderson's. This bull is deep made and smooth shouldered.

LOT 122

SPR A PILOT 558

BD: 2/17/2025 | AAA #: 21413645 | TATTOO: 558 | ACT. BW: 83 | ADJ. 205: 864

Bear Mtn Pilot 1520
Ellingson Pilot 3102
EA Bells Girl 1158

S Foundation 9158
Spr A 4110 Burgette 292
Spr A Burgette 4110 *Pathfinder*

Tehama Patriarch F028
Bear Mtn Judy 6535
Ellingson Profound 8155
EA Bells Girl 4183
S Foundation 514
S Delight 2526
Ellingson Dominance 2079
Spr A Burgette 135 *Pathfinder*

		CE	BW	WW	YW	SC	HP	CEM	MILK	DOC	CLAW	ANGLE
% EPDS		5	2.1	84	147	1.33	12.1	9	19	22	0.28	0.45
		60	70	15	15	25	45	40	95	40	2	40
		CW	MARB	RE	FAT	SM	SW	SF	SG	SB	SC	
% EPDS		70	0.45	0.71	0.028	68	68	110	43	153	266	
		20	80	50	60	50	45	25	75	50	50	

A Pilot 3102 son that comes out of the Burgette cow family. The Pathfinder granddam 4110 is out of the Pathfinder sire Dominance. The 4110 cow has a production of 10@105 BW, 10@107 WW and 5@113 YW. This dam is following in her footsteps with 2@104 BW, 2@108 WW, 1@105 YW. He is a stout made bull that ratioed 108 at weaning.

LOT 123

SPR A ARMSTRONG 578

BD: 3/10/2025 | AAA #: 21413651 | TATTOO: 578 | ACT. BW: 87 | ADJ. 205: 722

S Armstrong
SR South Armstrong 3293
U2 Erelite 109Z

Spr A Summit 349
Spr A 8125 Pride Duchess 1121
Spr A 4024 Pride Duchess 8125

S Architect 9501
S Queen Essa 7149
Young Dale Xclusive 25X
U-2 Erelite 1X
S Summit 956
S Queen Essa 208 *Pathfinder*
Spr A Dateline 468
Prairie Pride Duchess 4024

		CE	BW	WW	YW	SC	HP	CEM	MILK	DOC	CLAW	ANGLE
% EPDS		-3	4	91	157	0.34	14.5	0	21	30	0.58	0.4
		95	95	5	10	85	15	95	85	10	85	20
		CW	MARB	RE	FAT	SM	SW	SF	SG	SB	SC	
% EPDS		76	0.12	0.75	0.02	72	74	122	28	150	267	
		10	95	45	50	40	35	10	95	55	50	

An Armstrong son that is very deep sided, bigger boned and very balanced. He will be a larger framed bull. He ratioed 104 at weaning and he has some powerful growth EPDs both WW and YW EPDs are in the top 5% and 10%. His docility and HP EPD are ranked 10% and 15%. Dam has 3 calves at 102 for WW.

LOT 124

SPR A ARMSTRONG 586

BD: 4/2/2025 | AAA #: 21413653 | TATTOO: 586 | ACT. BW: 87 | ADJ. 205: 696

S Armstrong
SR South Armstrong 3293
U2 Erelite 109Z

Spr A Dateline 468
Spr A 4024 Pride Duchess 8125
Prairie Pride Duchess 4024

S Architect 9501
S Queen Essa 7149
Young Dale Xclusive 25X
U-2 Erelite 1X
Vermilion Dateline 7078
Sitz Everelda Entense 4968
Vin-Mar Mr Jones
Prairie Pride Duchess 1040

		CE	BW	WW	YW	SC	HP	CEM	MILK	DOC	CLAW	ANGLE
% EPDS		-1	4.7	88	150	0.62	11.7	0	16	32	0.43	0.4
		95	95	10	10	70	50	95	95	3	30	20
		CW	MARB	RE	FAT	SM	SW	SF	SG	SB	SC	
% EPDS		52	0	0.72	-0.035	44	57	83	25	109	185	
		60	95	50	10	95	70	75	95	95	95	

A powerful Armstrong son that has excellent depth of body along with being big boned and very good footed. His growth EPDs are strong with his WW and YW at the top 10% of the breed. Look to add weight in your calves with this one. He will be a quiet, larger framed bull. His dam has another son working for Kevin Scheiderer in Ohio.



TARGETING the BRAND™

The Targeting the Brand™ logo highlights registered Angus bulls with greater genetic potential to produce calves that meet the most challenging specifications of the *Certified Angus Beef®* brand. **Only 1 in 4 non-parent Angus bulls qualify.**

MINIMUM GENETIC REQUIREMENTS

Marbling EPD (Marb)	+0.65
Dollar Grid Carcass Index (\$G)	+55.0

For more information on Targeting the Brand™ visit CABCATTLE.COM

27 of the 64 bulls in the sale qualify for the CAB Targeting the Brand stamp.



LOT 201

LOT 201

EAR BREAKTHROUGH 5012

BD: 1/24/2025 | AAA #: 21410121 | TATTOO: 5012 | ACT. BW: 86 | ADJ. 205: 907

Wilks Regiment 9035

WAR Cavalry B063 Z044

Chestnut Force 482

Vintage Chloe 6137

Chestnut Captivation 958

R5 Solution E11
Chestnut Captivation WJ7118

MGR Treasure

VA R Discovery 2240

EAR Miss Treasure E117

SIH Impression of 6108 1614

EAR Miss Tour Duty E605

R B Tour Of Duty 177

Ear Miss Pendelton E017 *Pathfinder*



	CE	BW	WW	YW	SC	HP	CEM	MILK	DOC	CLAW	ANGLE
% EPDS	4	2.6	94	163	0.94	11.2	11	32	32	0.51	0.44
	70	80	3	4	50	3	60	35	60	25	15
	CW	MARB	RE	FAT	\$M	\$W	\$F	\$G	\$B	\$C	
% EPDS	79	0.8	1.2	-0.035	67	95	113	71	184	306	
	10	45	10	10	50	4	20	25	20	25	

EAR Breakthrough 5012 is the first bull we have given an actual name, instead of using his sire's name. His name says it all. We believe this herd sire prospect is a breakthrough to the next level for our program and yours. He is a bigger framed bull with a ton of length, bone and muscle shape as well as a good set of feet and legs. Breakthrough carries the CAB stamp as well as the top 3% & 4% of the breed for WW and YW, along with a high \$C. Breakthrough is sired by Chestnut Force 482, the \$130,000 top selling bull in 2023 for Chestnut Angus. We were lucky enough to be a part of his ownership group and couldn't be more excited. Breakthrough's dam is an exceptional cow going back to our 017 donor. She has WW ratio of 3@108. We are planning on collecting this bull shortly after the sale for use in our herd. We are selling 2/3 semen interest and full possession.



LOT 201 Pictured Fall 2025



LOT 202



LOT 202 Pictured Fall 2025

LOT 202

EAR SKYFORCE 5010

BD: 1/24/2025 | AAA #: 21410120 | TATTOO: 5010 | ACT. BW: 84 | ADJ. 205: 877

Wilks Regiment 9035

WAR Cavalry B063 Z044
Vintage Chloe 6137

Chestnut Force 482

Chestnut Captivation 958

R5 Solution E11
Chestnut Captivation WJ 7118

EAR Miss Sky High E818

Musgrave Sky High 1535

EAR Miss Upward E507

Musgrave Big Sky
Flag Queen W 00649
Sitz Upward 307R
Ear Miss Pendelton E017 *Pathfinder*

	CE	BW	WW	YW	SC	HP	CEM	MILK	DOC	CLAW	ANGLE
% EPDs	10	0.8	87	149	0.73	11.9	6	24	25	0.56	0.5
	20	40	10	15	65	25	80	65	50	70	65
	CW	MARB	RE	FAT	SM	SW	SF	SG	SB	SC	
% EPDs	65	0.32	1.12	0.056	82	88	109	39	149	275	
	30	90	10	85	20	10	25	80	55	45	

EAR Sky Force 5010 is everyone else's favorite at our ranch. This herd sire is really cool, big, long, good footed and as stout as you can make one. There's going to be a theme with the Force progeny here. They are going to be long, big, good footed, high growth and docile, with a good Angus head. Sky Force's dam is a great cow, easy keeping with a perfect udder. She has a WW ratio of 6@103. We also think highly of this bull and want to sample him this spring. Selling 2/3 interest and full possession.

LOT 203

EAR FORCE 5003

BD: 1/22/2025 | AAA #: 21410098 | TATTOO: 5003 | ACT. BW: 80 | ADJ. 205: 863

Wilks Regiment 9035

WAR Cavalry B063 Z044
Vintage Chloe 6137

Chestnut Force 482

Chestnut Captivation 958

R5 Solution E11
Chestnut Captivation WJ 7118

Connealy Capitalist 2887

Connealy Capitalist 028
Homemade of Conanga 2887

SilverC PeanutCapitlist H224

Ressler Vicki 0070

Ellingson Regiment 6362
Ressler S Vicki 405

	CE	BW	WW	YW	SC	HP	CEM	MILK	DOC	CLAW	ANGLE
% EPDs	12	0.4	88	154	0.67	12.4	8	33	16	0.45	0.49
	10	30	10	10	65	70	35	60	40	55	15
	CW	MARB	RE	FAT	SM	SW	SF	SG	SB	SC	
% EPDs	74	0.7	1.18	0.018	76	99	110	62	172	299	
	15	55	10	50	30	2	25	35	30	25	

5003 is the first true calving ease son of Force. Like all of the Force sons he is a bigger framed bull with a lot of length and power but a little smoother shouldered. +12 CED and a +0.4 BW EPD makes him an excellent calving ease prospect. 5003 also comes with carcass merit, carrying the CAB stamp. Excellent calving ease prospect. Recommended for heifers.



LOT 204

5002 is a carbon copy of lot 203. Bigger framed bull, super long body with plenty of performance in a calving ease package. Slam dunk calving ease with growth is hard to find 5002 will give you both. Recommended for heifers.

LOT 204 EAR FORCE 5002

BD: 1/21/2025 | AAA #: 21410097 | TATTOO: 5002 | ACT. BW: 66 | ADJ. 205: 738

Wilks Regiment 9035
Chestnut Force 482
Chestnut Captivation 958

WAR Cavalry B063 Z044
Vintage Chloe 6137
R5 Solution E111
Chestnut Captivation WJ7118
TEF Outside 514
Spring Valley Gwen 6361
BT Impressive 898
TNT MS ALLY 947

Spring Valley Outside 3615
EAR Miss Outside E132
TNT Ms Ally 292

	CE	BW	WW	YW	SC	HP	CEM	MILK	DOC	CLAW	ANGLE
% EPDs	13	-0.9	69	128	0.78	15.9	12	31	24	0.46	0.43
	10	15	50	40	60	30	40	30	4	15	20
	CW	MARB	RE	FAT	\$M	\$W	\$F	\$G	\$B	\$C	
% EPDs	49	0.64	0.32	-0.008	85	77	87	50	138	264	
	70	60	90	20	15	25	65	60	70	55	

LOT 205 EAR SOLID GROUND 5015

BD: 1/25/2025 | AAA #: 21413257 | TATTOO: 5015 | ACT. BW: 84 | ADJ. 205: 917

Myers Fair-N-Square M39
Deep Creek Square Deal
Deep Creek Step Lass 064

Woodhill Blueprint
Myers Miss Beauty M136
RBM Step Ahead C80
Deep Creek Total Lass 701
V A R Discovery 2240
S H Impression of 6108 1614
S Powerpoint WS 5503
S Lass 7674

MGR Treasure
EAR Miss Treasure E237
S Lass 9529

	CE	BW	WW	YW	SC	HP	CEM	MILK	DOC	CLAW	ANGLE
% EPDs	-1	1.9	94	154	0.85	14.4	4	18	17	0.37	0.33
	95	65	3	10	55	65	15	3	15	85	95
	CW	MARB	RE	FAT	\$M	\$W	\$F	\$G	\$B	\$C	
% EPDs	51	0.57	0.64	0.013	95	87	77	49	126	258	
	65	70	60	45	5	10	85	60	85	60	

EAR Solid Ground 5015 is a maternal power house. He is sired by Select Sire's Deep Creek Square Deal who comes from Deep Creek Angus, one of the best maternal herds in South Dakota, if not the whole country. He is a big, stout, soggy made bull with a ton of power and look. His dam hit a home run with this being her second calf, she is ratioing 116 at weaning on her first 2. Solid Ground ratioed 114 himself and has the highest adjusted weaning weight in our entire offering at 917 lbs. Keep every daughter, you won't be disappointed. We also think enough of this bull we would like to sample him in our herd this spring through A.I. We will be selling 2/3 semen interest and full possession.

LOT 205





VISIT OUR WEBSITE &
SUBSCRIBE TO OUR
EMAIL LIST



LOT 207



LOT 208

LOT 206 EAR SILVERCREEK JUSTIFYH511

BD: 1/27/2025 | AAA #: 21422922 | TATTOO: H511 | ACT. BW: 88 | ADJ. 205: 805

KG Justified 3023
Connealy Justified 856A
Enzanna of Conanga 856A

Connealy Judgment
KG Miss Magic 1443
Connealy Gary
Enza of Conanga 7517
WAR Cavalry B063 Z044
Vintage Chloe 6137
Connealy Courage 25L
SSAF 167 Barbara 301 *Pathfinder*



Wilks Regiment 9035
SilverC SSAF Barb Regimnt H216

SilverCreekSSAFBarbCourtH506 *Pathfinder*

% EPDs		CE	BW	WW	YW	SC	HP	CEM	MILK	DOC	CLAW	ANGLE
10	0.5	83	147	1.66	13.6	10	24	9	0.64	0.58		
20	35	15	15	10	25	30	65	90	95	95		
% EPDs		CW	MARB	RE	FAT	\$M	\$W	\$F	\$G	\$B	\$C	
66	0.67	0.76	-0.047	49	79	118	60	178	280			
30	60	45	3	85	25	15	40	25	40			

H511 is a stout, thick topped bull with a lot of rib shape. The Justified females look to be good mothers that are easy keeping, and have good udder and foot structure. We believe H511 will sire some tremendous females and heavy steers. H511 also has a lot of performance, weaning at 805 lbs adjusted and ratiing 110 all with a moderate BW.

LOT 207 EAR SILVERCREEK JAMESON H519

BD: 1/31/2025 | AAA #: 21422917 | TATTOO: H519 | ACT. BW: 97 | ADJ. 205: 788

Basin Deposit 6249
Basin Jameson 1076
Basin Joy 9140

Basin Advance 3134
Basin Lucy 4288
EXAR Monumental 6056B
Basin Joy 5367
MGR Treasure
Echo of Conanga 5688
Connealy Traction 145E
Silver Creek Jody WarPtyH143



Connealy Treasure 5688
SilverC Jody Treasure H131
Silver C Jody Traction H840

% EPDs		CE	BW	WW	YW	SC	HP	CEM	MILK	DOC	CLAW	ANGLE
6	2.5	92	152	1.21	9.2	4	35	12	0.48	0.4		
55	80	4	10	30	85	85	10	85	50	20		
% EPDs		CW	MARB	RE	FAT	\$M	\$W	\$F	\$G	\$B	\$C	
78	1.07	0.81	0.001	55	99	109	76	186	296			
10	25	40	30	75	2	25	20	20	30			

H519 is a long bodied bull with a thick top and some rib shape. This Jameson son should sire a nice set of replacement females. He has the look of a maternal sire. H519 also has a nice balanced set of EPDs and Dollar values. He ratioged 108 at weaning.

LOT 208 EAR SPR A JAMESON 5032

BD: 1/30/2025 | AAA #: 21457982 | TATTOO: 5032 | ACT. BW: 76 | ADJ. 205: 856

Basin Deposit 6249
Basin Jameson 1076
Basin Joy 9140

Basin Advance 3134
Basin Lucy 4288
EXAR Monumental 6056B
Basin Joy 5367
Rito 707 of Ideal 3407 7075
SAV Blackcap May 4136
Ellingson Outback 9213
Spr A Miss Emulous 965 *Pathfinder*



SAV Resource 1441
Spr A 217 Miss Emulous 752 *Pathfinder*
Spr A Miss Emulous 217 *Pathfinder*

% EPDs		CE	BW	WW	YW	SC	HP	CEM	MILK	DOC	CLAW	ANGLE
10	-0.8	76	135	1.51	14.1	11	39	19	0.47	0.37		
20	15	30	30	15	15	25	2	55	45	10		
% EPDs		CW	MARB	RE	FAT	\$M	\$W	\$F	\$G	\$B	\$C	
68	1.01	0.78	0.041	78	94	98	70	169	297			
25	30	40	75	25	4	45	25	35	30			

5032 is probably the best Jameson in our offering. He is a thick, smooth shouldered bull with calving ease and power. He carries the CAB Targeting the Brand stamp. We call him true calving ease with a 10 CED and -0.8 BW EPD. Dam is a picture perfect cow with a good udder and tons of mass. Recommended for heifers.

LOT 209 EAR SQUARE DEAL 5019

BD: 1/26/2025 | AAA #: 21413268 | TATTOO: 5019 | ACT. BW: 80 | ADJ. 205: 746

Deep Creek Square Deal
Myers Fair-N-Square M39
Deep Creek Step Lass 064

Woodhill Blueprint
Myers Miss Beauty M136
RBM Step Ahead C80
Deep Creek Total Lass 701

EAR Miss Cowboy Up E908
HA Cowboy Up 5405
Ear Miss Upward E007 *Pathfinder*

HA Outside 3008
HA Blackcap Lady 1602 *Pathfinder*
Sitz Upward 307R
EAR Power Queen E435



% EPDs		CE	BW	WW	YW	SC	HP	CEM	MILK	DOC	CLAW	ANGLE
		14	-1.3	69	123	1.33	13.3	8	30	19	0.42	0.38
		4	10	50	50	25	55	25	15	25	55	25
% EPDs		CW	MARB	RE	FAT	\$M	\$W	\$F	\$G	\$B	\$C	
		49	0.91	0.41	0.011	90	74	90	63	153	288	
		70	35	85	40	10	35	60	35	50	35	

5019 is another well balanced bull by Square Deal. We like the smooth shoulder and power this bull has. He carries the CAB stamp and will be a true calving ease bull. Recommended for heifers.

LOT 210 EAR SILVERC IRON HORSE H528

BD: 2/6/2025 | AAA #: 21422934 | TATTOO: H528 | ACT. BW: 84 | ADJ. 205: 817

Big/WSC Iron Horse 025F
EXAR Stallion 7986
EXAR Henrietta Pride 5702

EXAR Stud 4658B
EXAR Blackcap 3385
SandPoint Butkus X797
Sitz Henrietta Pride 643T

SilverC Shoshone JustifyH341
Connealy Justified 856A
SilverC Shosh Capitst H119

KG Justified 3023
Erzanna of Conanga 856A
Connealy Capitalist 2887
SilverC Shosh SierraCuth413 *Pathfinder*



% EPDs		CE	BW	WW	YW	SC	HP	CEM	MILK	DOC	CLAW	ANGLE
		6	0.9	96	175	1.16	8.2	10	19	32	0.49	0.4
		55	45	2	1	35	95	30	95	3	55	20
% EPDs		CW	MARB	RE	FAT	\$M	\$W	\$F	\$G	\$B	\$C	
		73	0.76	0.99	-0.036	47	80	117	66	184	286	
		15	50	20	5	90	20	15	30	20	35	

H528 is a long bodied, smooth shouldered bull with a thick top. He carries the CAB stamp and weaned off at 817 lbs. His body type and EPDs read calving ease but with 84 lb BW I can't guarantee heifer safe, but if you have big heifers, he might work on them.

LOT 211 EAR FORCE 5018

BD: 1/25/2025 | AAA #: 21410106 | TATTOO: 5018 | ACT. BW: 98 | ADJ. 205: 901

Chestnut Force 482
Wilks Regiment 9035
Chestnut Captivation 958

WAR Cavalry B063 ZD44
Vintage Chloe 6137
R5 Solution E111
Chestnut Captivation WJ 7118

Spr A 7105 Erica 015
Ellingson Powerpoint 7084
HAF Erica 7105

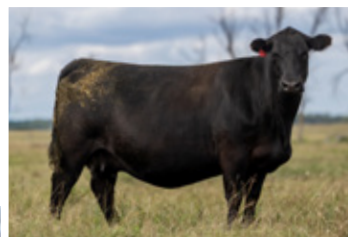
S Powerpoint WS 5503
EA Lassie 5298
Vin-Mar Mr Right 4515
Jar Erica 547 7198

% EPDs		CE	BW	WW	YW	SC	HP	CEM	MILK	DOC	CLAW	ANGLE
		-2	4.5	90	169	1.08	11.8	3	25	18	0.41	0.41
		95	95	10	2	40	60	25	20	50	90	60
% EPDs		CW	MARB	RE	FAT	\$M	\$W	\$F	\$G	\$B	\$C	
		75	0.25	0.29	0.057	41	67	116	26	142	225	
		15	95	95	90	95	50	15	95	65	85	

5018 is long, stout, big boned and big framed. These next few bulls are going to bring the heat as far as performance. 5018 weaned off at 901 lbs and hasn't stopped. He has big weaning and yearling EPDs that stand true to his growth. 5018's dam came from Dale in this sale 4 years ago and has proved to be a great producer. She had a half blood Sim bull in last year's sale that sold to TA Anderson Farms, Milnor ND for \$7750. This bull is ALL Angus but will run with any Simmental as far as size and performance.



LOT 211



LOT 212's Dam Pictured Fall 2025

LOT 212 EAR FORCE 5020

BD: 1/26/2025 | AAA #: 21410108 | TATTOO: 5020 | ACT. BW: 82 | ADJ. 205: 812

Chestnut Force 482
Wilks Regiment 9035
Chestnut Captivation 958

WAR Cavalry B063 ZD44
Vintage Chloe 6137
R5 Solution E111
Chestnut Captivation WJ 7118

EAR Miss Dually E115
DL Dually 828
Hall Princess Sue 944

DL Dually
DL Karama 1183 *Pathfinder*
S Thrive JAS 5515
Hall Princess Sue 510

% EPDs		CE	BW	WW	YW	SC	HP	CEM	MILK	DOC	CLAW	ANGLE
		1	2.9	90	159	0.6	10.8	4	16	27	0.58	0.52
		90	85	10	5	70	15	85	75	65	85	95
% EPDs		CW	MARB	RE	FAT	\$M	\$W	\$F	\$G	\$B	\$C	
		59	0.56	0.66	0.015	57	70	92	48	141	240	
		45	70	55	45	75	40	55	65	65	75	

5020 is another high performing bull by Force. 5020 is long, shout and stands on a big bone and good feet. These Force genetics are going to add lbs and dollars to your bottom line. 5020 also weaned over 800 lbs and has high growth EPDs.



LOT 212

LOT 213

EAR SPR A MAN IN BLACK 5013

BD: 1/24/2025 | AAA #: 21471353 | TATTOO: 5013 | ACT. BW: 88 | ADJ. 205: 806

LAR Man In Black

Bar R Jet Black 5063
JMB Maxine TG 2131

Spr A Summit 349

Spr A 564 Madame Pride 1100

Spr A 0440 Madame Pride 564

Connealy Black Granite
Bar R Iris Anita 0113
Sitz Top Game 561X
JMB Maxine Deluxe 9034

S Summit 956
S Queen Essa 208 *Pathfinder*
S A V Resource 1441
Y T Madame Pride 0440



% EPDs		CE	BW	WW	YW	SC	HP	CEM	MILK	DOC	CLAW	ANGLE
		8	1.1	74	129	1.57	13.2	10	30	26	0.39	0.47
		35	50	35	40	15	30	30	25	20	15	50
% EPDs		CW	MARB	RE	FAT	\$M	\$W	\$F	\$G	\$B	\$C	
		52	0.79	0.54	0.059	95	75	85	55	141	278	
		60	45	70	90	5	30	70	50	65	40	

5013 is a big framed bull with a ton of length and adequate muscle. This Man in Black son catches your eye from the side profile. His dam is a moderate Madame Pride cow that puts everything into her calf. 5013 weaned at over 800 lbs while still having moderate BW. He also carries the CAB Stamp as a bonus.



LOT 215 Pictured Fall 2025



VIEW VIDEOS & REGISTER TO BID ONLINE AT
DVAUCTION.COM



LOT 214

EAR SILVERCREEK JUSTIFY H506

BD: 1/25/2025 | AAA #: 21422924 | TATTOO: H506 | ACT. BW: 90 | ADJ. 205: 819

Connealy Justified 856A

KG Justified 3023
Enzanna of Conanga 856A

Hoover Know How

SilverCreek Mav KnowHow H222

SilverCreek Mav Rapture H823 *Pathfinder*

Connealy Judgment
KG Miss Magic 1443
Connealy Gary
Enza of Conanga 7517

Hoover No Doubt
Blkcp Empress Ellston L265 *Pathfinder*
EXAR Rapture 5844B
SilverCreek Mav New Std H307



% EPDs		CE	BW	WW	YW	SC	HP	CEM	MILK	DOC	CLAW	ANGLE
		-3	3.8	92	168	1.3	10.7	2	18	19	0.4	0.33
		95	95	4	2	25	70	95	95	55	20	3
% EPDs		CW	MARB	RE	FAT	\$M	\$W	\$F	\$G	\$B	\$C	
		81	0.91	0.83	0.037	44	67	134	66	201	305	
		10	35	35	70	95	50	4	30	15	25	

H506 is a long, big boned, smooth shouldered, big testicled and big ribbed bull with plenty of performance. H506 weaned off at 819 lbs and has a high \$C of 305. Really complete calf that will add carcass value to your herd; he is CAB Stamped. He ratioed 112 at weaning as well.

LOT 215

EAR FORCE 5026

BD: 1/27/2025 | AAA #: 21410110 | TATTOO: 5026 | ACT. BW: 79 | ADJ. 205: 775

Chestnut Force 482

Wilks Regiment 9035
Chestnut Captivation 958

TEX Playbook 5437

EAR Miss Playbook E921

EAR Miss Aberdeen E729

WAR Cavalry B063 Z044
Vintage Chloe 6137
R5 Solution E11
Chestnut Captivation WJ 7118
Basin Payweight 1682
Rita 1C43 of 9M26 Complete
Mohren Aberdeen 2162
Ear Upward GYPSY E003

% EPDs		CE	BW	WW	YW	SC	HP	CEM	MILK	DOC	CLAW	ANGLE
		5	1.2	72	130	1.04	12.5	6	37	29	0.56	0.44
		60	50	40	35	40	10	80	35	40	70	3
% EPDs		CW	MARB	RE	FAT	\$M	\$W	\$F	\$G	\$B	\$C	
		54	0.35	1.13	-0.008	81	86	96	46	142	265	
		55	90	10	20	20	15	50	70	65	55	

5026, another Force son, built like all the rest in a calving ease package. 5026's mom raised Triplet heifer calves in 2024, she raised 2 of the 3 with the 3rd adopted onto another cow, all 3 weaned over 700 lbs and made the keep pen. 2 of the 3 stuck AI the other early 2nd cycle. 5026's dam stuck AI after that in 2025 to raise this bull that weighed 775 lbs at weaning and looks to be AI'd again. Fertility is key and this calf should have it. Recommended for heifers.

LOT 216

EAR MAN IN BLACK 5024

BD: 1/27/2025 | AAA #: 21413104 | TATTOO: 5024 | ACT. BW: 78 | ADJ. 205: 812

LAR Man In Black

Bar R Jet Black 5063
JMB Maxine TG 2131

Wilks Regiment 9035

Silver C Shosh Regiment H206

Silver C Shoshone Recharge H614

Connealy Black Granite
Bar R Iris Anita 0113
Sitz Top Game 561X
JMB Maxine Deluxe 9034

WAR Cavalry B063 Z044
Vintage Chloe 6137
S A V Recharge 3436
Silver C Shosh War Pty H305 *Pathfinder*

% EPDs		CE	BW	WW	YW	SC	HP	CEM	MILK	DOC	CLAW	ANGLE
		5	2.7	91	165	0.87	12.6	1	27	13	0.5	0.47
		60	80	5	3	55	80	60	50	35	95	45
% EPDs		CW	MARB	RE	FAT	\$M	\$W	\$F	\$G	\$B	\$C	
		87	0.35	1.09	0.004	62	83	125	44	170	282	
		3	90	15	35	60	15	10	75	35	40	

5024 is another ABS Man In Black son with a lot of length, smoother made and added power. He has a really balanced EPD profile leaning more towards being a growth bull. 5024 weaned off at 812 lbs and ratioed 101.

LOT 217 EAR SILVER CREEK JUSTIFYH517

BD: 1/30/2025 | AAA #: 21422916 | TATTOO: H517 | ACT. BW: 82 | ADJ. 205: 741

Connealy Justified 856A
Enzanna of Conanga 856A

Connealy Capitalist 2887
SilverC Shosh Capitlist H119
Silver C Shosh SierraCutH413 *Pathfinder*

Connealy Judgment
KG Miss Magic 1443
Connealy Gary
Enza of Conanga 7517
Connealy Capitalist 028
Homemade of Conanga 2887
Connealy Sierra Cut 7827
Silver C Lau Shosh 112 H768



		CE	BW	WW	YW	SC	HP	CEM	MILK	DOC	CLAW	ANGLE
% EPDs		2	1.1	81	129	0.54	11.6	5	19	26	0.55	0.45
		85	50	20	40	75	55	80	95	20	75	40
		CW	MARB	RE	FAT	\$M	\$W	\$F	\$G	\$B	\$C	
% EPDs		51	0.94	0.2	-0.024	74	77	88	64	152	271	
		65	35	95	10	35	25	65	35	55	50	

H517 is another Justified son that is long, smooth and thick. The Justified cattle have really been doing everything right. Plenty of growth, good carcass, and so far look like the daughters are going to be easy keeping with nice udders. H517 is CAB Stamped and ratioed 101 at weaning.

LOT 218 EAR SILVER CREEK JAMESONH522

BD: 2/2/2025 | AAA #: 21422904 | TATTOO: H522 | ACT. BW: 96 | ADJ. 205: 753

Basin Jameson 1076
Basin Joy 9140

Connealy Capitalist 2887
SilverC Shosh CapitalistH804
SilverCreekShoshoneWPTYH510

Basin Advance 3134
Basin Lucy 4288
EXAR Monumental 6056B
Basin Joy 5367
Connealy Capitalist 028
Homemade of Conanga 2887
Werner War Party 2417
Silver C Shoshone MentorH203



		CE	BW	WW	YW	SC	HP	CEM	MILK	DOC	CLAW	ANGLE
% EPDs		10	2.7	82	131	0.87	10.3	8	38	18	0.5	0.5
		20	80	20	35	55	75	55	3	60	60	65
		CW	MARB	RE	FAT	\$M	\$W	\$F	\$G	\$B	\$C	
% EPDs		58	0.99	0.6	-0.051	72	98	76	74	150	267	
		45	30	65	2	40	3	85	20	55	50	

H522 is a Basin Jameson son that checks a lot of boxes. H522 is long, really smooth shouldered bull with plenty of power and a nice head. H522 ratioed 103 at weaning and comes from a really nice Capitalist daughter. This bull should sire some nice females.

LOT 219 EAR SILVERCREEK JAMESON H512

BD: 1/27/2025 | AAA #: 21422918 | TATTOO: H512 | ACT. BW: 82 | ADJ. 205: 685

Basin Jameson 1076
Basin Joy 9140

SITZ Drive 625F
AAR Dutchess 167
EAR Miss SD E607 *Pathfinder*

Basin Advance 3134
Basin Lucy 4288
EXAR Monumental 6056B
Basin Joy 5367
Sitz Invasion 574D
SITZ Miss Burgess 304D *Pathfinder*
Mohnen South Dakota 402
Silver C Dutchess Hemi H311



		CE	BW	WW	YW	SC	HP	CEM	MILK	DOC	CLAW	ANGLE
% EPDs		1	3.4	95	157	0.64	11	7	33	15	0.45	0.51
		90	90	3	10	70	65	65	15	75	35	70
		CW	MARB	RE	FAT	\$M	\$W	\$F	\$G	\$B	\$C	
% EPDs		69	1.58	0.48	0.053	76	101	92	93	186	317	
		20	5	80	85	30	2	55	10	20	20	

H512 is a bull when I look at him I think longevity. He is a long, smooth made bull that doesn't really blow your doors off but when you study him you don't find anything wrong either. Really nice EPD profile that puts him towards the top half of the sale for most of his EPDs. He also carries the CAB Stamp. Ray purchased his dam from Ryan Anderson in the Pearls of the Prairie sale a few years back. The full sister to the dam of this bull raised our high seller last year to Haugen Cattle Company of Hannaford, ND.

LOT 220 EAR SILVERCREEK JUSTIFY H507

BD: 1/25/2025 | AAA #: 21422925 | TATTOO: H507 | ACT. BW: 73 | ADJ. 205: 785

Connealy Justified 856A
Enzanna of Conanga 856A

Connealy Treasure 5688
SilverCreek Mav TreasureH237
SilverC Mavrick CourageH908 *Pathfinder*

Connealy Judgment
KG Miss Magic 1443
Connealy Gary
Enza of Conanga 7517
MGR Treasure
Echo of Conanga 5688
Connealy Courage 25L
SilverCreekMaverickWUpH502

		CE	BW	WW	YW	SC	HP	CEM	MILK	DOC	CLAW	ANGLE
% EPDs		2	1.2	80	143	0.89	13.4	4	22	19	0.58	0.54
		85	50	20	20	50	25	85	80	55	85	85
		CW	MARB	RE	FAT	\$M	\$W	\$F	\$G	\$B	\$C	
% EPDs		53	0.48	0.66	-0.046	44	71	97	49	147	235	
		60	80	55	3	95	40	45	60	60	80	

H507 is another really complete made bull by Justified. Long spined with a smooth shoulder while adding a little more rib shape. H507 weaned heavy at 785 lbs ratioing 107 at weaning. Could be used on large framed heifers.

LOT 221 EAR SILVERCREEK JUSTIFY H531

BD: 2/10/2025 | AAA #: 21422931 | TATTOO: H531 | ACT. BW: 80 | ADJ. 205: 807

Connealy Justified 856A
Enzanna of Conanga 856A

Bigk/WSC Iron Horse 025F
SilverCMaverik IronHorseH324
SilverC Maverik Acclaim H105

Connealy Judgment
KG Miss Magic 1443
Connealy Gary
Enza of Conanga 7517
EXAR Stallion 7986
EXAR Henrietta Pride 5702
Jindra Acclaim
SilverC Maverik RechargeH701

		CE	BW	WW	YW	SC	HP	CEM	MILK	DOC	CLAW	ANGLE
% EPDs		3	1.6	95	165	0.95	11.6	10	21	32	0.53	0.45
		75	60	3	3	50	55	30	85	3	70	40
		CW	MARB	RE	FAT	\$M	\$W	\$F	\$G	\$B	\$C	
% EPDs		78	0.38	1.07	-0.003	64	86	126	46	172	287	
		10	85	15	25	55	15	10	70	30	35	

H531 is a grandson of Bigk/WSC Iron Horse 025F Ray picked Iron Horse for his calving ease and added frame and size and that is what he does best. Low birth weights with adequate growth adding a little more frame. H531 weaned at 807 lbs ratioing 110. Could possibly be used on large frame heifers.

LOT 222 EAR SILVER CREEK RIVAL H505

BD: 1/25/2025 | AAA #: 21422902 | TATTOO: H505 | ACT. BW: 88 | ADJ. 205: 729

E&B Rival 175
E&B Lady Plus 8180

Connealy Courage 25L
SilverC Dutchess CourageH703 *Pathfinder*
Silver C Dutchess TotalH210 *Pathfinder*

Basin Payweight 1682
Deer Valley Rifa 36113
Connealy Confidence Plus
E&B Lady Primestar 086
Connealy Confidence 0100
Pearl Pammy of Conanga 194
Silver Creek Total H033
Silver Creek Mandan H952

		CE	BW	WW	YW	SC	HP	CEM	MILK	DOC	CLAW	ANGLE
% EPDs		9	0.8	72	125	0.83	13.5	3	40	10	0.3	0.42
		30	40	40	45	55	25	90	1	90	3	25
		CW	MARB	RE	FAT	\$M	\$W	\$F	\$G	\$B	\$C	
% EPDs		66	0.53	1.09	0.046	79	87	102	50	152	276	
		30	75	15	80	25	10	35	60	55	45	

H505 is out of Select Sires E&B Rival 175, a Growth Fund son, with a little more carcass. H505 is a long bull, with some thickness and bone. H505's mom loved him a little too much when it was cold last winter so he does have some shorter ears. H505 should sire some nice females with both Connealy Courage and Deer Valley Growth Fund in his pedigree.

LOT 223 EAR SILVER CREEK JAMISONH501

BD: 1/24/2025 | AAA #: 21422903 | TATTOO: H501 | ACT. BW: 82 | ADJ. 205: 750

Basin Deposit 6249
Basin Jameson 1076
 Basin Joy 9140

Connealy Courage 25L
SilverC Shoshone CourageH712 *Pathfinder*
 SilverCreekShoshoneWPtyH510

Basin Advance 3134
 Basin Lucy 4288
 EXAR Monumental 6056B
 Basin Joy 5367
 Connealy Confidence 0100
 Pearl Pammy of Conanga 194
 Werner War Party 2417
 Silver C Shoshone MentorH203



% EPDs		CE	BW	WW	YW	SC	HP	CEM	MILK	DOC	CLAW	ANGLE
10	0.2	89	138	0.47	9.2	10	31	18	0.39	0.41		
20	30	10	25	80	85	30	20	60	15	20		
% EPDs		CW	MARB	RE	FAT	\$M	\$W	\$F	\$G	\$B	\$C	
70	0.89	1.08	0.019	67	101	99	70	169	286			
20	35	15	50	50	2	45	25	35	35			

H501 I call a ranchers bull, long and smooth, and will get out and cover some ground. H501 is another Jameson that has a nice EPD profile. H501 ratioed 102 at weaning and also carries the CAB Stamp all while being a calving ease bull. Recommended for heifers.



LOT 224 EAR SILVER CREEK COURAGEH504

BD: 1/25/2025 | AAA #: 21422900 | TATTOO: H504 | ACT. BW: 86 | ADJ. 205: 748

Connealy Confidence 0100
Connealy Courage 25L
 Pearl Pammy of Conanga 194

SAV Recharge 3436
SilverC ShoshoneRechargeH601 *Pathfinder*
 Silver C Shoshone GM H643J

Connealy Tobin
 Becka Gala of Conanga 8281
 Vermilion Dateline 7078
 Pearl Jam of Conanga 6114
 Rito 707 of Ideal 3407 7075
 SAV Blackcap May 4136
 G A R Grid Maker
 Silver C Shoshone Ilini 341 *Pathfinder*

% EPDs		CE	BW	WW	YW	SC	HP	CEM	MILK	DOC	CLAW	ANGLE
10	1.9	68	110	-0.08	7.9	10	21	18	0.48	0.5		
20	65	55	70	95	95	30	85	60	50	65		
% EPDs		CW	MARB	RE	FAT	\$M	\$W	\$F	\$G	\$B	\$C	
43	0.1	0.76	0.017	59	62	80	27	107	198			
80	95	45	50	70	60	80	95	95	95			

H504 was not what we were hoping for when we bred H601 to Courage. Ray really wanted a heifer calf from the mating being it was going to be the last run for H601. She has produced many top sellers over the years for us; she is big ribbed and perfect uddered. This is Ray's loss but your gain. This Courage son should sire a really nice set of replacement females!

LOT 225 EAR SPR A REGIMENT 5059

BD: 2/15/2025 | AAA #: 21469830 | TATTOO: 5059 | ACT. BW: 88 | ADJ. 205: 820

Wilks Regiment 9035
FHF Regiment 389
 NSF Crystal F148

Ellingson Dominance 2079
Spr A Burgette 4110 *Pathfinder*
 Spr A Burgette 135 *Pathfinder*

WAR Cavalry B063 Z044
 Vintage Chloe 6137
 Bar S Sure Deal 5202
 NSF Crystal B125
 LT Territory 5824 of EA
 SAV Blackclass 374
 Tehama Blackcap Revolution
 Farview Burgette 3295

% EPDs		CE	BW	WW	YW	SC	HP	CEM	MILK	DOC	CLAW	ANGLE
8	1.1	68	128	2.41	12.1	5	31	19	0.44	0.46		
35	50	55	40	1	45	80	20	55	35	45		
% EPDs		CW	MARB	RE	FAT	\$M	\$W	\$F	\$G	\$B	\$C	
58	0.44	0.89	-0.018	50	64	104	48	152	247			
45	80	30	15	85	55	35	65	55	70			

5059 is a long bodied, bigger framed bull with a smooth shoulder. He does have a little white behind his naval, just so everyone is aware. 5059 is sired by our pick of a great flush of Regiment sons from Four Hill Farms, Barnesville, MN out of their 2024 sale. I believe that whole flush went to purebred producers. Very complete bulls, with lots of libido. 5059 weaned heavy at 820 lbs and still has a moderate birth EPD. Should sire a really nice set of steers or females.

LOT 226 EAR FORCE 5014

BD: 1/24/2025 | AAA #: 21410104 | TATTOO: 5014 | ACT. BW: 78 | ADJ. 205: 823

Wilks Regiment 9035
Chestnut Force 482
 Chestnut Captivation 958

Hilltops Charged Up 44T
SilverCrk Jody ChargedUpH215 *Pathfinder*
 Silver Creek Jody 4268 H125 *Pathfinder*

WAR Cavalry B063 Z044
 Vintage Chloe 6137
 R5 Solution E11
 Chestnut Captivation WJ 7118
 SAV Recharge 3436
 Hilltops Miss Product 7K *Pathfinder*
 B/R Future Direction 4268
 Silver Creek Jody ND208 H503

% EPDs		CE	BW	WW	YW	SC	HP	CEM	MILK	DOC	CLAW	ANGLE
3	2.5	88	152	0.16	13.2	6	25	25	0.57	0.48		
75	80	10	10	90	25	85	55	30	70	60		
% EPDs		CW	MARB	RE	FAT	\$M	\$W	\$F	\$G	\$B	\$C	
75	0.6	0.86	0.039	59	79	121	51	172	282			
15	65	35	75	70	25	10	60	30	40			

5014 should have been listed higher in the order but I missed him on my sheet, oops! This Force son is like the rest - long, smooth shouldered and super thick. 5014 weaned at 823 lbs with a ratio of 102. 5014 dam H215 had a Justified bull in last year's sale, selling to Ben Lambrecht, Lisbon, ND for \$7500. So you can see this young female is getting it done.



LOT 226 Pictured Fall 2025

LOT 227 EAR FORCE 5023

BD: 1/27/2025 | AAA #: 21410109 | TATTOO: 5023 | ACT. BW: 60 | ADJ. 205: 767
 Wilks Regiment 9035
Chestnut Force 482
 Chestnut Captivation 958
 Sitz Upward 307R
EAR Miss Upward E507
 Ear Miss Pendelton E017 *Pathfinder*

WAR Cavalry B063 Z044
 Vintage Chloe 6137
 R5 Solution E111
 Chestnut Captivation WJ 7118
 Connealy Onward
 Sitz Henrietta Pride 81M
 HARB Pendleton 765 JH
 Tokach Black Lady 8198

% EPDS		CE	BW	WW	YW	SC	HP	CEM	MILK	DOC	CLAW	ANGLE
		4	1.8	76	134	1.21	14	4	26	21	0.48	0.44
		70	65	30	30	30	45	50	35	20	85	50
% EPDS		CW	MARB	RE	FAT	\$M	\$W	\$F	\$G	\$B	\$C	
		68	0.28	1.15	0.005	81	73	113	42	155	282	
		25	90	10	35	20	35	20	75	50	40	

5023 is a calving ease Force son that still got up and grew. His Sitz Upward 307 Dam has 6@104 for weaning and is a direct daughter of our 017 donor cow. Recommended for heifers.

LOT 228 EAR DUKE 5047

BD: 2/9/2025 | AAA #: 21413097 | TATTOO: 5047 | ACT. BW: 79 | ADJ. 205: 825
 B Bar Windy 7 3575
Millars Duke 816
 Millars Queen Lass 5273
 Hoover No Doubt
EAR Black Lady E324
 EAR Miss Tour Duty E605

B Bar Windy 79
 B Bar Eulima 357
 Tombstone 050
 Millars Queen Lass 3276
 Mogck Bullseye
 Miss Blackcap Ellston J2
 R B Tour Of Duty 177
 Ear Miss Pendelton E017 *Pathfinder*

% EPDS		CE	BW	WW	YW	SC	HP	CEM	MILK	DOC	CLAW	ANGLE
		7	0.2	79	140	0.98	16.9	1	33	24	0.43	0.49
		45	30	25	20	45	30	30	60	2	95	15
% EPDS		CW	MARB	RE	FAT	\$M	\$W	\$F	\$G	\$B	\$C	
		71	0.55	0.39	0.095	87	87	123	39	162	297	
		20	70	85	95	15	10	10	80	40	30	

5047 is a Millars Duke 816 son, a new out cross sire for us. 5047 was supposed to be pictured, but we ran out of time picture day and didn't get back to it. 5047 is a moderate bull with a smooth front end and a thick top. 5047 is out of a first calf heifer that goes back to our 017 donor. She did a great job on this first one weaning at 825 lbs while still maintaining calving ease. Recommended for heifers.

LOT 229 EAR DUKE 5049

BD: 2/11/2025 | AAA #: 21412978 | TATTOO: 5049 | ACT. BW: 68 | ADJ. 205: 799
 B Bar Windy 7 3575
Millars Duke 816
 Millars Queen Lass 5273
 Connealy Justified 856A
SilverC Shoshone Justify H307
 SilverC Shoshone Recharge H601 *Pathfinder*

B Bar Windy 79
 B Bar Eulima 357
 Tombstone 050
 Millars Queen Lass 3276
 KG Justified 3023
 Enzanna of Conanga 856A
 SA V Recharge 3436
 SilverC Shoshone GM H643J

% EPDS		CE	BW	WW	YW	SC	HP	CEM	MILK	DOC	CLAW	ANGLE
		5	-0.3	77	126	1.78	11.7	7	35	25	0.34	0.52
		60	20	30	45	10	25	10	75	50	65	10
% EPDS		CW	MARB	RE	FAT	\$M	\$W	\$F	\$G	\$B	\$C	
		55	0.59	0.31	0.043	92	95	89	44	133	265	
		55	65	90	75	10	4	65	75	75	55	

5049 is another Duke son that is smooth in his make up but still maintains a lot of muscle shape. 5049 tried to break the 800 bls and weaned at 749 lbs. High \$M of 92 ranking him 7th highest in the entire sale. Recommended for heifers.

LOT 230 EAR SILVERCREEK JUSTIFY H509

BD: 1/26/2025 | AAA #: 21422923 | TATTOO: H509 | ACT. BW: 74 | ADJ. 205: 753
 KG Justified 3023
Connealy Justified 856A
 Enzanna of Conanga 856A
 Connealy Treasure 5688
SilverC Jody Treasure H233
 SilverCreekJodyWUpH507

Connealy Judgment
 KG Miss Magic 1443
 Connealy Gary
 Enza of Conanga 7517
 MGR Treasure
 Echo of Conanga 5688
 Plattemere Weigh Up K360
 SilverCreekJody 208 H802



% EPDS		CE	BW	WW	YW	SC	HP	CEM	MILK	DOC	CLAW	ANGLE
		7	0	86	155	1.13	12.6	9	21	34	0.5	0.52
		45	25	10	10	35	35	40	85	1	60	75
% EPDS		CW	MARB	RE	FAT	\$M	\$W	\$F	\$G	\$B	\$C	
		50	1.02	0.48	-0.015	68	79	80	71	151	264	
		65	30	80	15	50	25	80	25	55	55	

H509 is a long spined, smooth shouldered bull with good rib shape. H509 carries the CAB Stamp. Recommended for heifers.

LOT 231 EAR ECLIPSE 5042

BD: 2/7/2025 | AAA #: 21417178 | TATTOO: 5042 | ACT. BW: 74 | ADJ. 205: 803
 SS Traveler 6807 T510
S Eclipse 169
 H L Lady Traveler 416
 PVF Blacklist 7077
EAR Miss Ella E307
 CCC Lady Courage 6003

D H D Traveler 6807
 SS Miss Hi Spade A114
 D H D Traveler 6807
 Miss Challenger H L 176
 PVF Insight 0129
 PVF Blackbird 3070
 Connealy Courage 25L
 CCC Upshot Lady 3132

% EPDS		CE	BW	WW	YW	SC	HP	CEM	MILK	DOC	CLAW	ANGLE
		8	2.5	69	117	0.37	9.4	10	23	17	0.53	0.58
		35	80	50	60	85	65	70	95	85	30	75
% EPDS		CW	MARB	RE	FAT	\$M	\$W	\$F	\$G	\$B	\$C	
		66	0.51	1.08	-0.073	29	57	118	58	176	257	
		30	75	15	1	95	70	15	45	25	60	

5042 is bringing old school and new school together. 5042 is a long, smooth shouldered bull with some added bone. He is sired by S Eclipse 169, a Traveler T510 son, we purchased with Collin LaPlant at Spickler Ranch's 2nd ever Angus sale, that's been a minute! S Eclipse 169 is the maternal grandsire of S Chisum 6175 who needs no introduction. Combining S Eclipse with PVF Insight and Connealy Courage should make for a maternal sire, keep every daughter kind of herd bull.

LOT 232 EAR SILVER CREEK COURAGE H514

BD: 1/28/2025 | AAA #: 21422905 | TATTOO: H514 | ACT. BW: 96 | ADJ. 205: 731
 Connealy Confidence 0100
Connealy Courage 25L
 Pearl Pammy of Conanga 194
 Werner War Party 2417
Silver Creek Mandan WPTYH809 *Pathfinder*
 Silver Creek Mandan H952

Connealy Tobin
 Becka Gala of Conanga 8281
 Vermilion Dateline 7078
 Pearl Jam of Conanga 6114
 Connealy Onward
 BAAR USA Lady Jaye 489
 SA V Mandan 5664
 Silver C Lau Duchss SRoy 467

% EPDS		CE	BW	WW	YW	SC	HP	CEM	MILK	DOC	CLAW	ANGLE
		9	1.2	58	101	0.05	11.9	11	39	21	0.51	0.47
		30	50	80	85	95	50	25	2	45	60	50
% EPDS		CW	MARB	RE	FAT	\$M	\$W	\$F	\$G	\$B	\$C	
		37	0.43	0.72	0.024	74	72	67	42	110	217	
		90	80	50	55	35	35	95	75	95	90	

H514 is a smooth shouldered bull with some top shape. He is a ranchers bull, really well balanced Courage son.



LOT 235 Pictured with his Dam Fall 2025

LOT 233

EAR SILVERCREEK JUSTIFY H521

BD: 2/2/2025 | AAA #: 21422909 | TATTOO: H521 | ACT. BW: 95 | ADJ. 205: 708

KG Justified 3023

Connealy Justified 856A

Enzanna of Conanga 856A

KB-Full Measure C40

Ressler Sarah 9049

RAR Regis 471Z209 *Pathfinder*

Connealy Judgment
KG Miss Magic 1443

Connealy Gary
Enza of Conanga 7517

Plattmere Weigh Up K360
KB-Emma-Ten X-B02

Coleman Regis 904
Silver C Lau Jody Exp H471C *Pathfinder*

	CE	BW	WW	YW	SC	HP	CEM	MILK	DOC	CLAW	ANGLE
% EPDS	6	0.3	79	131	1.04	10.2	6	21	9	0.51	0.54
	55	30	25	35	40	75	70	85	90	60	85
	CW	MARB	RE	FAT	\$M	\$W	\$F	\$G	\$B	\$C	
% EPDS	67	0.26	0.71	0.016	54	79	119	34	154	254	
	25	95	50	45	80	25	15	90	50	65	

H521 is a really nice Justified son with a little more testicle development. Genomics call him calving ease, he has that look about him.

LOT 234

EAR SILVERCREEK JUSTIFYH539

BD: 2/21/2025 | AAA #: 21422906 | TATTOO: H539 | ACT. BW: 98 | ADJ. 205: 728

KG Justified 3023

Connealy Justified 856A

Enzanna of Conanga 856A

Connealy Traction 145E

Silver C Jody Traction H840

Silver Creek Jody WarPtyH143

Connealy Judgment
KG Miss Magic 1443

Connealy Gary
Enza of Conanga 7517

JMB Traction 292
Helga of Conanga 145E *Pathfinder*

Werner War Party 2417
Silver C Lau Jody Ilini H193 *Pathfinder*

	CE	BW	WW	YW	SC	HP	CEM	MILK	DOC	CLAW	ANGLE
% EPDS	-3	3.6	81	146	1.49	12.8	-1	20	20	0.48	0.45
	95	95	20	15	15	35	95	90	50	50	40
	CW	MARB	RE	FAT	\$M	\$W	\$F	\$G	\$B	\$C	
% EPDS	66	0.62	0.66	-0.036	36	60	108	55	164	249	
	30	65	55	5	95	65	25	50	40	65	

H539 is the youngest bull in Ray's offering. That being said, he still brings some growth and a nice profile.

LOT 235

EAR COMMERCE 5073

BD: 3/1/2025 | AAA #: 21420711 | TATTOO: 5073 | ACT. BW: 82 | ADJ. 205: 833

Connealy Commerce

Connealy Commerce 8535

Iris of Conanga 8535

Hoffman Thedford

EAR Princess E317

EAR Miss Dually E115

GAR Sunbeam
Avira of Conanga 814R

Connealy Niobrara 5451
Inez of Conanga 512T

Bar R Jet Black 5063
HA Rito Lady 3839 *Pathfinder*

DL Dually 828
Hall Princess Sue 944

	CE	BW	WW	YW	SC	HP	CEM	MILK	DOC	CLAW	ANGLE
% EPDS	6	1.3	91	164	1.81	14.3	9	35	27	0.42	0.47
	55	50	5	3	10	15	25	50	15	40	10
	CW	MARB	RE	FAT	\$M	\$W	\$F	\$G	\$B	\$C	
% EPDS	69	0.68	0.73	0.064	103	104	103	52	155	304	
	20	55	50	90	2	1	35	55	50	25	

5073 is a younger bull out of a first calf heifer that really got up and grew. 5073 adjusted out at 833 lbs at weaning. His genetics follow suit placing him in the top 5% for WW and 3% for YW in the entire breed. 5073 also has a huge \$M of 103 putting him in the top 2% of the breed and a \$W of 104 placing him in the top 1% of the breed, as well as a strong \$C coming in at 304 placing him in the top 25%. This bull should really sire some nice females. Could be used on larger framed heifers.

LOT 236

EAR MAN IN BLACK 5057

BD: 2/13/2025 | AAA #: 21410115 | TATTOO: 5057 | ACT. BW: 89 | ADJ. 205: 789

LAR Man In Black

TA Man In Black 2374

BT Kyma 267

MOGCK Entice

SilverCreek Jody Entice H220

Silver C Jody Traction H840

Bar R Jet Black 5063
JMB Maxine TG 2131

Connealy Big Money
BT Kyma 294

SydGen Enhance
MOGCK Erica 2255 *Pathfinder*

Connealy Traction 145E
Silver Creek Jody WarPtyH143

	CE	BW	WW	YW	SC	HP	CEM	MILK	DOC	CLAW	ANGLE
% EPDS	3	2.6	83	143	1.2	13.5	4	21	26	0.39	0.46
	75	80	15	20	30	20	15	45	25	85	85
	CW	MARB	RE	FAT	\$M	\$W	\$F	\$G	\$B	\$C	
% EPDS	67	0.62	0.75	-0.005	58	69	99	54	154	258	
	25	65	45	25	70	45	45	50	50	60	

5057 is a grandson of ABS LAR Man in Black. He is long spined, thick topped bull with a big foot. 5057 sire was our pick out of Thompson Angus, Kintyre, ND, 2024 sale we purchased him for \$14,000. He is really well balanced sire with a good genomic profile. Man in Black X Entice should sire a lot of pounds.

LOT 237

EAR REGIMENT 5052

BD: 2/12/2025 | AAA #: 21410114 | TATTOO: 5052 | ACT. BW: 67 | ADJ. 205: 744

Wilks Regiment 9035
FHF Regiment 389
NSF Crystal F148

WAR Cavalry B063 Z044
Vintage Chloe 6137
Bar S Sure Deal 5202
NSF Crystal B125
Mogk Bullseye
Miss Blackcap Ellston J2
R B Tour Of Duty 177
Ear Miss Pendelton E017 *Pathfinder*

Hoover No Doubt
EAR Miss No Doubt E207
EAR Miss Tour Duty E605

	CE	BW	WW	YW	SC	HP	CEM	MILK	DOC	CLAW	ANGLE
% EPDs	10	-1.4	76	136	1.3	10.8	12	23	24	0.56	0.45
	20	10	30	25	25	30	80	40	65	15	75
	CW	MARB	RE	FAT	\$M	\$W	\$F	\$G	\$B	\$C	
% EPDs	65	0.53	1.12	0.045	42	68	118	50	169	261	
	30	75	10	80	95	45	15	60	35	55	

5052 is a really nice calving ease prospect by FHF Regiment 389. Like his sire, very balanced with a lot of growth for a calving ease bull. 5052 is a slam dunk heifer bull. Recommended for heifers.

LOT 239

EAR SILVER CREEK STEP UPH508

BD: 1/26/2025 | AAA #: 21422901 | TATTOO: H508 | ACT. BW: 82 | ADJ. 205: 634

GAR Big Step K715
EZAR Step Up 9178
Basin Lucy 4261

GAR Sure Fire
Chair Rock Prophet 3131
EXAR Denver 2002B
Basin Lucy 1022
Rito 707 of Ideal 3407 7075
SAV Blackcap May 4136
RR Traveler 5204
Silver Creek Mav Total H961

SAV Recharge 3436
SilverC Maverik Recharge H701
Silver Creek Total 5204 H136



	CE	BW	WW	YW	SC	HP	CEM	MILK	DOC	CLAW	ANGLE
% EPDs	3	1.6	58	111	1.14	13.1	7	22	34	0.45	0.39
	75	60	80	70	35	30	65	80	1	35	15
	CW	MARB	RE	FAT	\$M	\$W	\$F	\$G	\$B	\$C	
% EPDs	48	1	0.78	0.023	78	47	97	71	168	296	
	70	30	40	55	25	85	45	25	35	30	

H508 is a really nice EZAR Step Up 9178 son that carries the CAB Stamp. He is a long ranchy made bull that has a lot of good in him. Could be used on large frame heifers.

LOT 238

EAR SILVER CREEK COURAGEH502

BD: 1/25/2025 | AAA #: 21422919 | TATTOO: H502 | ACT. BW: 94 | ADJ. 205: 729

Connealy Confidence 0100
Connealy Courage 25L
Pearl Pammy of Conanga 194

Connealy Tobin
Becka Gala of Conanga 8281
Vermilion Dateline 7078
Pearl Jam of Conanga 6114
Sitz Invasion 574D
SITZ Miss Burgess 304D *Pathfinder*
Mohren South Dakota 402
Silver C Dutchess Hemi H311

SITZ Drive 625F
AAR Dutchess 168
EAR Miss SD E607 *Pathfinder*

	CE	BW	WW	YW	SC	HP	CEM	MILK	DOC	CLAW	ANGLE
% EPDs	8	0.6	67	122	0.8	14.3	12	40	22	0.63	0.57
	35	35	55	50	60	15	15	1	40	95	95
	CW	MARB	RE	FAT	\$M	\$W	\$F	\$G	\$B	\$C	
% EPDs	50	0.62	0.88	0.056	88	84	87	51	138	267	
	65	65	30	85	15	15	65	60	70	50	

H502 is a son of Connealy Courage 25L. He is long spined, smooth shouldered, rancher type bull. His dam raised our stop seller last year by EZAR Step Up 7178, sold to Haugen Cattle Company, Hannaford, ND for \$15,000. The genetics are all here, just put this bull to work.

LOT 240

EAR SILVERC IRON HORSE H535

BD: 2/15/2025 | AAA #: 21422933 | TATTOO: H535 | ACT. BW: 72 | ADJ. 205: 743

EXAR Stallion 7986
Bigk/WSC Iron Horse 025F
EXAR Henrietta Pride 5702

EXAR Stud 4658B
EXAR Blackcap 3385
SandPoint Butkus X797
Sitz Henrietta Pride 643T

Connealy Treasure 5688
SilverC Sarah Treasurer H337
Ressler Sarah 9049



	CE	BW	WW	YW	SC	HP	CEM	MILK	DOC	CLAW	ANGLE
% EPDs	12	-0.5	75	128	0.46	10	12	29	22	0.57	0.46
	10	20	35	40	80	80	15	30	40	85	45
	CW	MARB	RE	FAT	\$M	\$W	\$F	\$G	\$B	\$C	
% EPDs	51	0.82	1.05	-0.052	67	84	89	71	161	276	
	65	45	15	2	50	15	65	25	40	45	

H535 is an Iron Horse that is long and smooth made. He carries the CAB Stamp as well. Sleep all night heifer bull. Recommended for heifers.

LOT 237 (Far Right) Pictured Fall 2025



THE FEMALE OFFERING



BRED HEIFER SERVICE Sires

REF. M

MILLARS DUKE 816

AAA #: 19343216

B Bar Windy 79
B Bar Windy 7 3575
B Bar Eulima 357

Crook Mt Really Windy 141
B Bar Lady Jewel 116
B Bar Rainmaker 9601
B Bar Eulima 970

Tombstone 050
Millars Queen Lass 5273
Millars Queen Lass 3276

Sitz Upward 307R
Myty Countess 906
V D A R Really Windy 4097
Millars Queen Las 8276

CE	BW	WW	YW	SC	HP	CEM	MILK	DOC	CLAW	ANGLE
5	-0.7	81	130	1.22	11	-1	31	20	0.41	0.52
CW	MARB	RE	FAT	\$M	\$W	\$F	\$G	\$B	\$C	
51	0.18	0.31	0.052	59	92	99	23	122	217	

AI Sire Bred Heifers

REF. O

CONNELY RESTORE 178C

AAA #: 20383223

SS Niagara Z29
Tehama Patriarch F028
Tehama Elite Blackbird D826

Hoover Dam
Jet SSX144
Connealy Thunder
Tehama Elite Blackbird Z630

Connealy Stronghold
Jenna of Conanga 936J
Jelly of Conanga 733F

Connealy Rampart
Presta of Conanga 5817
Basin Payweight 1682
Jeela of Conanga 4276



CE	BW	WW	YW	SC	HP	CEM	MILK	DOC	CLAW	ANGLE
11	-1.2	72	129	1.42	14.2	10	37	25	0.4	0.43
CW	MARB	RE	FAT	\$M	\$W	\$F	\$G	\$B	\$C	
54	0.8	0.92	0.24	100	92	94	63	157	304	

AI Sire Bred Heifers

REF. N

COLEMAN EASY DECISION 1539

AAA #: 20503415

O C C Juneau 807J
Coleman Rock 7200
Coleman Donna 714

O C C Emblazon 854E
O C C Dixie Erica 903E
Connealy Onward
Coleman Donna 386

Coleman Charlo 0256
Coleman Donna 7386
Coleman Donna 5309

O C C Paxton 730P
Bohi Abigale 6014
Wulfs Ext 6106
Coleman Donna 714

CE	BW	WW	YW	SC	HP	CEM	MILK	DOC	CLAW	ANGLE
10	-0.3	72	124	1.77	13.4	7	22	29	0.3	0.4
CW	MARB	RE	FAT	\$M	\$W	\$F	\$G	\$B	\$C	
45	0.04	0.71	0.04	104	71	77	22	99	232	

AI Sire Bred Heifers

REF. P

SPR A 8102 DOMINANCE 2123

AAA #: 20523456

Ellingson Dominance 2079
Spr A Dominance 8102
Spr A Princess 462

IT Territory 5824 of EA
SAV Blacklass 374
Hyline Right Time 338
EA Princess 028

TEX Playbook 5437
Spr A 6115 Ava Lee 04
JAR Ava Lee 8100 6115

Basin Payweight 1682
Rita 1C43 of 9M26 Complete
CW 7783 Passport 322
JAR Ava Lee 6114 8100

CE	BW	WW	YW	SC	HP	CEM	MILK	DOC	CLAW	ANGLE
9	0.6	56	97	1.22	14.6	12	32	11	0.41	0.32
CW	MARB	RE	FAT	\$M	\$W	\$F	\$G	\$B	\$C	
29	0.29	0.36	0.038	103	67	68	30	98	230	

Clean Up Bull to the bred heifers



LOT 131

LOT 130 **SPR A 226 DORA 463**

BD: 2/17/2024 | AAA #: 21101435 | TATTOO: 463 | ACT. BW: 77 | ADJ. 205: 618

GAR Home Town
Spr A Home Town 237
KFL Erica 808 006

MOGCK Entice
Spr A 511 Dora 226
Spr A 641 Dora 511 *Pathfinder*

GAR Ashland
Chair Rock Sure Fire 6095
Casino Bomber N33
KFL Speedy Erica 808
Svd Gen Enhance
MOGCK Erica 2255 *Pathfinder*
Ellingson Dominance 2079
SAV Dora 8336



% EPDs		CE	BW	WW	YW	SC	HP	CEM	MILK	DOC	CLAW	ANGLE
		2	1.3	83	140	1.17	9.9	7	24	29	0.56	0.47
		85	50	15	20	30	75	65	65	10	80	50
% EPDs		CW	MARB	RE	FAT	\$M	\$W	\$F	\$G	\$B	\$C	
		67	0.98	1.26	-0.046	68	82	102	81	184	307	
		30	35	10	4	45	20	40	20	25	25	

A bred heifer that is deep sided and has a wide hip. She is out of the Dora Cow Family that has done excellent. This heifer's dam raised this calf as a heifer then bred back and had twin bulls, and they are both in my bull sale. She is quiet and carries a +307 \$C, and ribeye EPD in the top 10%. She was AI'd to Millars Duke 816 on 6-11-2025. Ultrasounded and due approximately 3-20-2026 to Duke.

LOT 131 **SPR A 298 CHLOE 476**

BD: 2/24/2024 | AAA #: 21101442 | TATTOO: 476 | ACT. BW: 73 | ADJ. 205: 482

GAR Home Town
Spr A Home Town 237
KFL Erica 808 006

GAR Sure Fire
Spr A 036 Chloe 298
Spr A 113 Chloe 036

GAR Ashland
Chair Rock Sure Fire 6095
Casino Bomber N33
KFL Speedy Erica 808
Connealy In Sure 8524
Chair Rock 5050 GAR 8086
MOGCK Entice
Spr A Chloe 113 *Pathfinder*



% EPDs		CE	BW	WW	YW	SC	HP	CEM	MILK	DOC	CLAW	ANGLE
		5	3.4	71	113	1.89	11.3	3	17	26	0.52	0.39
		60	90	45	65	4	55	90	95	20	65	15
% EPDs		CW	MARB	RE	FAT	\$M	\$W	\$F	\$G	\$B	\$C	
		44	1.45	1.03	0.018	93	61	91	96	188	337	
		80	10	20	50	10	60	60	10	25	15	

A heifer that has that wedge look. She is thick and angular. She has a marbling EPD that is in the top 10% of the breed, the highest in my offering. \$M of +93 is the top 10% and a \$C of over +300 is great. AI'd to Millars Duke 816 on 6-11-2025. Ultrasounded and due approximately 3-20-2026 to Duke.

LOT 132 **SPR A 271 PRIDE 418**

BD: 2/1/2024 | AAA #: 21109101 | TATTOO: 418 | ACT. BW: 65 | ADJ. 205: 549

Tehama Upward Y238
Tehama Tahoe B767
Tehama Mary Blackbird Y684

Spr A Dominance 8102
Spr A 056 Pride 271
Spr A 234 Pride 056

Sitz Upward 307R
Tehama Elite Blackbird T735
SAV Final Answer 0035
Tehama Mary Blackbird T073
Ellingson Dominance 2079
Spr A Princess 462
Ellingson Homestead 6030
Spr A Pride 234

% EPDs		CE	BW	WW	YW	SC	HP	CEM	MILK	DOC	CLAW	ANGLE
		10	0.5	75	131	0.89	15.5	12	32	22	0.56	0.41
		20	35	35	35	50	5	15	15	40	80	20
% EPDs		CW	MARB	RE	FAT	\$M	\$W	\$F	\$G	\$B	\$C	
		60	0.63	0.8	0.049	104	88	111	51	162	314	
		45	70	45	85	2	10	25	60	45	20	

A royally bred heifer by Tehama Tahoe who has excellent performance ratioing 105 at weaning and a dam with a track record that looks like this 2@92 for birth and 2@104 for weaning. This heifers \$M, \$W, \$F and \$C are among the Angus breeds top 2%, 10%, 25% and 20% respectively. AI bred on 6-11-2025 to Millars Duke 816. Ultrasounded and due approximately 3-20-2026 to Duke.

LOT 133 **SPR A 221 MISS ELBA 427**

BD: 2/1/2024 | AAA #: 21108810 | TATTOO: 427 | ACT. BW: 75 | ADJ. 205: 510

Connealy In Sure 8524
GAR Sure Fire
Chair Rock 5050 GAR 8086

Ellingson Three Rivers 8062
Spr A 469 Miss Elba 221
Spr A Miss Elba 469

Mytty In Focus
Entreena of Conanga 657
GAR New Design 5050
Chair Rock Grid Maker 2107
Ellingson Homestead 6030
EA Emblynette 6279
Hoover Dam
SR Miss Elba 7911



% EPDs		CE	BW	WW	YW	SC	HP	CEM	MILK	DOC	CLAW	ANGLE
		7	0.3	59	111	2.29	15.8	9	36	20	0.63	0.45
		45	30	75	70	1	4	40	4	50	95	40
% EPDs		CW	MARB	RE	FAT	\$M	\$W	\$F	\$G	\$B	\$C	
		54	1.02	0.55	0.011	74	68	103	70	173	298	
		60	35	75	45	30	45	35	30	35	30	

A GAR Sure Fire daughter that should add some marbling to her offspring. She also has an excellent scrotal EPD that is in the top 1%. The cow family this heifer comes from is a family that has maternal bred into it. She was AI'd on 6-11-2025 to Coleman Easy Decision 1539. Ultrasounded and due approximately 3-20-2026 to Easy Decision.



LOT 136

LOT 134

SPR A 011 QUEEN ESSA 433

BD: 2/3/2024 | AAA #: 21102787 | TATTOO: 433 | ACT. BW: 75 | ADJ. 205: 523

Connealy Craftsman
Sitz Resilient 10208
Black Cathy of Conanga 8521

Spr A 898 Queen Essa 011
GAR Sure Fire
Spr A 336 Queen Essa 898

Sitz Stellar 726D
Sitz Miss Burgess 1856
Connealy Niobrara 5451
Black Carla of Conanga 450
Connealy In Sure 8524
Chair Rock 5050 GAR 8086
HA Cowboy Up 5405
Spr A Queen Essa 336 *Pathfinder*



% EPDs		CE	BW	WW	YW	SC	HP	CEM	MILK	DOC	CLAW	ANGLE
		6	1.1	71	122	0.62	13.9	6	27	20	0.46	0.51
		55	45	45	50	70	20	70	45	50	40	70
% EPDs		CW	MARB	RE	FAT	\$M	\$W	\$F	\$G	\$B	\$C	
		56	1.23	0.6	0.06	95	78	107	77	185	335	
		55	20	70	90	5	25	30	20	25	15	

A Craftsman daughter that should be calving ease by her DNA ratios. She comes from the Queen Essa cow family that we acquired through some embryos. Another heifer that has a \$C that not many reach. Her marbling EPD is the second highest in my offering. AI'd on 6-11-2025 to Easy Decision 1539 than pasture exposed to Spr A 8102 Dominance 2123. Ultrasounded too close to tell. Due approximately 3-31-2026.

LOT 135

SPR A 014 ELIMINATOR414

BD: 1/31/2024 | AAA #: 21109238 | TATTOO: 414 | ACT. BW: 69 | ADJ. 205: 579

Connealy Craftsman
Sitz Resilient 10208
Black Cathy of Conanga 8521

Spr A 853 Eliminator 014 *Pathfinder*
GAR Sure Fire
Spr A 4180 Eliminator 853

Sitz Stellar 726D
Sitz Miss Burgess 1856
Connealy Niobrara 5451
Black Carla of Conanga 450
Connealy In Sure 8524
Chair Rock 5050 GAR 8086
Bruns Blaster
JAR Eliminator 142 4180 *Pathfinder*



% EPDs		CE	BW	WW	YW	SC	HP	CEM	MILK	DOC	CLAW	ANGLE
		4	2.3	84	148	1.01	13.9	6	33	26	0.54	0.45
		70	75	15	15	45	20	70	10	20	70	40
% EPDs		CW	MARB	RE	FAT	\$M	\$W	\$F	\$G	\$B	\$C	
		73	0.88	0.8	0.073	92	93	119	62	181	327	
		20	45	45	95	10	5	15	40	25	15	

A daughter of Connealy Craftsman that ratioed 105 at weaning, and out of a dam that has a record like this BW 3@100, WW 3@102, YW 2@109. \$W and \$M are in the top 5 and 10%, her \$C of +327 is an excellent EPD. Her twin sister is in my replacement pen. AI'd on 6-11-2025 to Coleman Easy Decision 1539 than pasture exposed to Spr A 8102 Dominance 2123 due approximately 5-8-2026 to Dominance.

LOT 136

SPR A 469 MISS ELBA 468

BD: 2/18/2024 | AAA #: 21101438 | TATTOO: 468 | ACT. BW: 74 | ADJ. 205: 525

EAR Treasure E017
MGR Treasure
EAR Miss VRD E712

Spr A Miss Elba 469
Hoover Dam
SR Miss Elba 7911

VAR Discovery 2240
SIH Impression of 6108 1614
Vermilion Dateline 7078
Silver Creek JodyWarPtyH301
SydGen CC&7
Erica of Ellston C124 *Pathfinder*
SAV 8180 Traveler 004
SAV Miss Elba 3801



% EPDs		CE	BW	WW	YW	SC	HP	CEM	MILK	DOC	CLAW	ANGLE
		3	3.1	76	141	1.19	12.8	11	28	20	0.49	0.48
		75	85	30	20	30	30	25	35	50	50	55
% EPDs		CW	MARB	RE	FAT	\$M	\$W	\$F	\$G	\$B	\$C	
		61	0.79	0.53	0.058	71	67	103	55	158	276	
		40	55	75	90	40	45	35	55	50	45	

A daughter of the 017 Treasure bull that has the awesome VRD in his background. She is going to be a big powerful cow. Her and her sister both have DNA numbers near the top for performance. This deep sided heifer has that look. AI'd on 6-11-2025 to Easy Decision 1539. Ultrasounded and due approximately 3-20-2026 to Easy Decision.

LOT 137

SPR A 469 MISS ELBA 467

BD: 2/18/2024 | AAA #: 21101437 | TATTOO: 467 | ACT. BW: 71 | ADJ. 205: 522

EAR Treasure E017
MGR Treasure
EAR Miss VRD E712

Spr A Miss Elba 469
Hoover Dam
SR Miss Elba 7911

VAR Discovery 2240
SIH Impression of 6108 1614
Vermilion Dateline 7078
Silver Creek JodyWarPtyH301
SydGen CC&7
Erica of Ellston C124 *Pathfinder*
SAV 8180 Traveler 004
SAV Miss Elba 3801



% EPDs		CE	BW	WW	YW	SC	HP	CEM	MILK	DOC	CLAW	ANGLE
		5	1.6	69	133	0.5	9.5	12	25	20	0.49	0.3
		60	60	50	30	75	80	15	60	50	50	2
% EPDs		CW	MARB	RE	FAT	\$M	\$W	\$F	\$G	\$B	\$C	
		59	0.67	0.61	-0.004	64	60	109	55	164	277	
		45	65	70	30	55	60	25	55	40	45	

This bred heifer has a twin sister in the sale; they are doing fantastic. Their genomics have them both near the top of the Angus breed for performance. They are out of the 017 bull that I got from Jeremy & Stacy, and he did an awesome job as you can see. AI'd on 6-11-2025 to Easy Decision 1539. Ultrasounded and due approximately 3-20-2026 to Easy Decision.



LOT 138

LOT 138 **SPR A 567 BURGETTE 45**

BD: 1/26/2024 | AAA #: 21109130 | TATTOO: 45 | ACT. BW: 60 | ADJ. 205: 558

Coleman Charlo 0256

SA V Rainfall 6846

SAV Blackcap May 4136

Ellingson Dominance 2079

Spr A 135 Burgette 567

Spr A Burgette 135 *Pathfinder*

OCC Paxton 730P

Bohi Abigale 6014

SAV 8180 Traveler 004

SAV May 2397

LT Territory 5824 of EA

SAV Blackclass 374

Tehama Blackcap Revolution

Farview Burgette 3295



% EPDs	CE	BW	WW	YW	SC	HP	CEM	MILK	DOC	CLAW	ANGLE
	3	2.1	67	121	0.82	13.3	10	28	19	0.44	0.34
	75	70	55	50	55	25	30	35	55	30	4
% EPDs	CW	MARB	RE	FAT	\$M	\$W	\$F	\$G	\$B	\$C	
	42	0.82	0.37	0.046	70	64	83	55	139	250	
	85	50	90	80	40	50	75	55	70	70	

A beautiful bred heifer out of the Burgette Cow Family, the 135 cow being in the donor pen. The twin sister to this heifer is in my replacement pen. This heifer is deep sided and thick and is excellent footed. She ratioed 101 at weaning time. A/d on 6-11-2025 to Millars Duke 816 then pasture exposed to Spr A 8102 Dominance 2123, due approximately 5-15-2026 to Dominance.

LOT 139 **SPR A 030 PRINCESS 470**

BD: 2/19/2024 | AAA #: 21101439 | TATTOO: 470 | ACT. BW: 87 | ADJ. 205: 575

JSAR Titan

S Titan 1572

SSelena 201

Ellingson Homestead 6030

Spr A 457 Princess 030

Spr A Princess 457

Jsar Mr Rodman 39HKR

JSAR Blk Future Direct 201RT

SSummit 956

SSelena 0418

CTS Remedy 1T01

EA Erica 1082

Hyline Right Time 338

EA Princess 028

% EPDs	CE	BW	WW	YW	SC	HP	CEM	MILK	DOC	CLAW	ANGLE
	3	3.8	86	155	0.06	12	9	33	16	0.67	0.54
	75	95	10	10	95	45	40	10	70	95	85
% EPDs	CW	MARB	RE	FAT	\$M	\$W	\$F	\$G	\$B	\$C	
	79	0.18	1.05	-0.006	39	80	123	36	160	247	
	10	95	20	25	95	20	10	90	45	70	

A big, long Titan daughter. A very strong heifer having the highest WW and YW EPD's in my offering. Along with her weaning and yearling EPD she has 9 EPD's in the top 10% (WW, YW, RADG, YH, Milk, MW, MH, CW & \$F). Dam has 4 @104 for weaning and 3@106 for yearling weight. A/d on 6-11-2025 to Easy Decision 1539. Ultrasounded and due approximately 3-20-2026 to Easy decision.

LOT 140 **SPR A 0106 PRIDE 429**

BD: 2/2/2024 | AAA #: 21109243 | TATTOO: 429 | ACT. BW: 87 | ADJ. 205: 528

Sitz Resilient 10208

Connealy Craftsman

Black Cathy of Conanga 8521

Spr A Summit 349

Spr A 247 Pride 0106

Spr A 346Pride 247

Sitz Stellar 726D

Sitz Miss Burgess 1856

Connealy Niobrara 5451

Black Carla of Conanga 450

SSummit 956

S Queen Essa 208 *Pathfinder*

Boyd New Day 8005

EA Pride 346 *Pathfinder*

% EPDs	CE	BW	WW	YW	SC	HP	CEM	MILK	DOC	CLAW	ANGLE
	5	2.1	62	101	0.85	11.3	6	44	18	0.36	0.52
	60	70	70	80	55	55	70	1	60	10	75
% EPDs	CW	MARB	RE	FAT	\$M	\$W	\$F	\$G	\$B	\$C	
	43	0.66	0.34	0.05	96	89	76	47	123	256	
	80	65	95	85	4	10	85	70	85	60	

A heifer out of the very popular Craftsman sire. On the bottom side she goes back to a couple of excellent cow families the Queen Essa 208 and the Pride 346 cow. They both carry exceptional maternal power. A/d on 6-11-2025 to Millars Duke 816. Ultrasounded and due approximately 3-20-2026 to Duke.

LOT 141 **SPR A 927 PRIDE 472**

BD: 2/23/2024 | AAA #: 21101440 | TATTOO: 472 | ACT. BW: 80 | ADJ. 205: 457

JSAR Titan

S Titan 1572

SSelena 201

SAV Renown 3439

Spr A 234 Pride 927

Spr A Pride 234

Jsar Mr Rodman 39HKR

JSAR Blk Future Direct 201RT

SSummit 956

SSelena 0418

Rito 707 of Ideal 3407 7075

SAV Blackcap May 4136

Connealy Impression

KLC Pride 136

% EPDs	CE	BW	WW	YW	SC	HP	CEM	MILK	DOC	CLAW	ANGLE
	2	1.4	67	122	1.46	11.1	8	31	23	0.47	0.51
	85	55	55	50	20	60	50	20	35	45	70
% EPDs	CW	MARB	RE	FAT	\$M	\$W	\$F	\$G	\$B	\$C	
	44	0.35	0.5	0.037	68	70	80	35	115	217	
	80	90	80	75	45	40	80	90	90	90	

Another daughter by the S Titan 1572. She is a big, long, and powerful heifer. Her dam has a record that looks like this 4@97 for birth, 4@99 for weaning and 3@105 for yearling. A/d on 6-11-2025 to Connealy Restore 178C then pasture exposed to Spr A 8102 Dominance 3123. Ultrasounded and too close to tell due approximately 3-31-2026.

LOT 142

SPR A 511 DORA 492

BD: 7/1/2024 | AAA #: 21266558 | TATTOO: 492 | ACT. BW: 74 | ADJ. 205: 445

MGR Treasure

EAR Treasure E017

EAR Miss VRD E712

Ellingson Dominance 2079

Spr A 641 Dora 511 *Pathfinder*
SAV Dora 8336

VAR Discovery 2240
SIH Impression of 6108 1614
Vermilion Dateline 7078
Silver Creek Jody WarPty H301
LT Territory 5824 of EA
SAV Blackclass 374
BR Columbus 426
SAV Dora 4475

		CE	BW	WW	YW	SC	HP	CEM	MILK	DOC	CLAW	ANGLE
% EPDS		2	2	70	127	0.73	9.8	9	28	21	0.52	0.5
		85	65	45	40	60	80	40	35	45	65	65
		CW	MARB	RE	FAT	\$M	\$W	\$F	\$G	\$B	\$C	
% EPDS		38	0.61	0.12	0.04	47	64	70	42	113	194	
		90	70	95	75	90	50	95	80	95	95	

This bred heifer is the youngest bred in my offering. She is moderate now, but pretty sure when she matures she will be a pretty big cow. Genomics say she will have excellent performance. Her dam has done excellent with 8@103 BW, 8@104 WW, and 5@111 for yearling weight. She is also a pathfinder. AI'd on 6-11-2025 to Easy Decision 1539. Ultrasounded and due approximately 3-20-2026 to Easy Decision.

LOT 144

SPR A 583 PRIDE 491

BD: 6/7/2024 | AAA #: 21266557 | TATTOO: 491 | ACT. BW: 72 | ADJ. 205: 493

MGR Treasure

EAR Treasure E017

EAR Miss VRD E712

Connealy Earman 076E

Spr A 346 Pride 583 *Pathfinder*
EA Pride 346 *Pathfinder*

VAR Discovery 2240
SIH Impression of 6108 1614
Vermilion Dateline 7078
Silver Creek Jody WarPty H301
Connealy Consensus
Brazila of Conanga 3991 839A
Sitz Alliance 6595
EA Pride 114



		CE	BW	WW	YW	SC	HP	CEM	MILK	DOC	CLAW	ANGLE
% EPDS		0	4.7	77	139	0.69	11.5	7	27	12	0.6	0.56
		90	95	30	25	65	50	65	45	85	90	90
		CW	MARB	RE	FAT	\$M	\$W	\$F	\$G	\$B	\$C	
% EPDS		60	0.94	-0.03	0.059	45	60	94	55	150	240	
		45	40	95	90	90	60	55	55	60	75	

This Treasure daughter is the second youngest heifer in my offering. But she is out of a great cow family. Her dam is a pathfinder along with quite a few in her background. Dam's record is 7@101 for birth, 7@107 for weaning and 4@105 for yearling weight. AI'd on 6-11-2025 to Easy Decision 1539, then pasture exposed to Spr A 8102 Dominance 2123. Ultrasounded and due approximately 4-1-2026 to Dominance.

LOT 143

SPR A 5106 BUSHES DESIGN 481

BD: 3/1/2024 | AAA #: 21101444 | TATTOO: 481 | ACT. BW: 80 | ADJ. 205: 508

MGR Treasure

EAR Treasure E017

EAR Miss VRD E712

Ellingson Dominance 2079

Spr A 057 Bushes Design 5106
SPR A Bushes Design 615 057

VAR Discovery 2240
SIH Impression of 6108 1614
Vermilion Dateline 7078
Silver Creek Jody WarPty H301
LT Territory 5824 of EA
SAV Blackclass 374
Sitz Upward 307R
SA Bushes Design 615

		CE	BW	WW	YW	SC	HP	CEM	MILK	DOC	CLAW	ANGLE
% EPDS		9	1.6	61	128	0.82	11.6	11	32	25	0.63	0.48
		30	60	70	40	55	50	25	15	25	95	55
		CW	MARB	RE	FAT	\$M	\$W	\$F	\$G	\$B	\$C	
% EPDS		51	0.57	0.18	0.048	44	54	94	41	135	219	
		65	75	95	85	90	70	55	80	75	90	

Following in her dam's and grandam's footsteps, here is a heifer that is as quiet as they are. Dam's record looks like this 9@99 for weaning and 5@99 for yearling. AI'd on 6-11-2025 to Coleman Easy Decision 539. Ultrasounded and due approximately 3-20-2026 to Easy Decision.

LOT 145

SPR A 12 MISS EMULOUS 479

BD: 2/25/2024 | AAA #: 21101443 | TATTOO: 479 | ACT. BW: 70 | ADJ. 205: 413

MOGCK Entice

Ear Silver Creek Entice H108

Silver Creek Jody WUp H507

Spr A Dateline 468

Spr A 217 Miss Emulous 12 *Pathfinder*
Spr A Miss Emulous 217 *Pathfinder*

SydGen Enhance
MOGCK Erica 2255
Plattmere Weigh Up K360
Silver Creek Jody 208 H802
Vermilion Dateline 7078
Sitz Everelda Entense 4968
Ellingson Outback 9213
Spr A Miss Emulous 965 *Pathfinder*



		CE	BW	WW	YW	SC	HP	CEM	MILK	DOC	CLAW	ANGLE
% EPDS		5	2.5	67	120	2.52	9	5	24	32	0.57	0.46
		60	80	55	50	1	90	80	65	3	80	45
		CW	MARB	RE	FAT	\$M	\$W	\$F	\$G	\$B	\$C	
% EPDS		38	0.85	0.1	0.027	50	56	69	55	124	211	
		90	50	95	60	85	70	95	55	85	90	

A nice and quiet heifer out of the Miss Emulous cow family. Her docility EPD is 32 and puts her in the top 3%. She should make some excellent quiet females. Her genomics for WW and YW say she will be at the top of the breed for performance and her scrotal EPD is excellent also. AI'd on 6-11-2025 to Millars Duke 816, then pasture exposed to Spr A 8102 Dominance 2123. Ultrasounded and due approximately 4-10-2026 to Dominance.





OPEN HEIFERS

All Erdmann heifers will have their spring shots before the sale. Preg Guard 10, pinkeye, anthrax, foot rot and Multi Min Shot. **ERDMANN ANGUS HEIFER GAURANTEE:** We will guarantee these heifers to be safe in calf as of November 1 in the year of purchase. If a heifer is determined open at this date, you can return the open heifer to us and receive full credit for her. In order for the heifers to qualify for this gaurantee, they must have at least a 45 day breeding season and still be owned by the original purchaser.

REF. Q FHF REGIMENT 389

AAA #: 20790105

WAR Cavlary 8063 Z044
Wilks Regiment 9035
Vintage Chloe 6137

Connealy Cavalry 1149
War CC&7 Z044 X029
VA R Empire 3037
VA R Chloe 2227

Bar S Sure Deal 5202
NSF Crystal F148
NSF Crystal B125

Bushs Sure Deal 33
Bar S Pride 0017
O C C Understudy 918U
NSF Crystal 004 S55

CE	BW	WW	YW	SC	HP	CEM	MILK	DOC	CLAW	ANGLE
6	1.4	85	152	1.45	12	4	36	19	0.47	0.45

CW	MARB	RE	FAT	\$M	\$W	\$F	\$G	\$B	\$C
68	0.39	1	-0.039	56	94	109	48	158	261

Herd Sire to Purebred Commerical Heifers

REF. R CONNEALY COMMERCE 8535

AAA #: 20725527

G A R Sunbeam
Connealy Commerce
Aviar of Conanga 814R

G A R Sunrise
G A R Ingenuity 3132
Connealy Cade
Avie of Conanga 624P

Connealy Nibrara 5451
Iris of Conanga 8535
Inex of Conanga 512T

Connealy Confidence Plus
Britha of Conanga 167
Connealy Trooper 3682
Irene of Conanga 5577

CE	BW	WW	YW	SC	HP	CEM	MILK	DOC	CLAW	ANGLE
10	-0.2	84	150	0.64	11.5	10	36	25	0.5	0.58

CW	MARB	RE	FAT	\$M	\$W	\$F	\$G	\$B	\$C
69	0.77	0.78	0.01	82	98	104	61	165	296

Herd Sire to Purebred Commerical Heifers

REF. S CONNEALY JUSTIFIED 856A

AAA #: 20132394

Connealy Judgment
KG Justified 3023
KG Miss Magic 1443

Connealy Consensus 7229
Etrine of Conanga 9876
Sitz Wisdom 481T
KG Miss Magic 3528

Connealy Gary
Enzanna of Conanga 856A
Enza of Conanga 7517

Connealy Nibrar 5451
Hertha of Conanga 1639
Plattermere Weigh Up K360
Emmy of Conanga 4105

CE	BW	WW	YW	SC	HP	CEM	MILK	DOC	CLAW	ANGLE
3	1	88	155	1.63	11.4	8	18	27	0.47	0.51

CW	MARB	RE	FAT	\$M	\$W	\$F	\$G	\$B	\$C
67	0.68	0.55	-0.008	58	76	123	55	178	289

Herd Sire to Purebred Commerical Heifers

LOT 236 COMMERCIAL HEIFER GROUP

This year we will be selling 12 purebred commercial heifers. Really nice set of top end heifers. Most are out of registered cows, a few from our purebred commercial recip herd. Born in March and a handful early April. Sired by FHF Regiment 389, Connealy Commerce 8535 and Connealy Justified 856A. They will come in as a group take as many as you want.

Ready to understand your insurance options?

Work with an agent that watches the markets, understands break-evens, and lives and breathes in the industry day to day. Don't settle for anything less...

- * Livestock Risk Protection (LRP)
- * Livestock Gross Margin (LGM)
- * Pasture, Rangeland & Forage (PRF)
- * Multi-Peril Crop Insurance (MPCI)
- * Crop Hail Insurance

Ask us about daily LRP quotes to your inbox!

Stacy Erdmann, Agent

stacy@croplandinsurance.com | (701) 680-1224



This agency is an equal opportunity provider.

Megan Huether, Agent

megan@croplandinsurance.com | (701) 680-8882



PROFITABILITY AGAINST ALL



VITAFERM

Inputs are high. Do more with less, and drive your profitability with VitaFerm®. VitaFerm is a line of nutritional supplements for beef cattle that maximize energy and forage utilization for successful production.

For more information, contact your BioZyme® Area Sales Manager **Justin Doubet** at (816) 596-8795 ext. 2106 or local dealer **Bar E Feeds, Stacy & Jeremy Erdmann** at 701-683-5992.



RANCHER'S PRAYER



HEAVENLY FATHER,

As I rise each day to care for the land and the animals you've entrusted to me, I ask for your guidance, strength, and protection. Grant me the wisdom to manage my resources wisely, and the endurance to work long hours in the fields and pastures.

Bless the animals under my care. Keep them healthy and safe from harm. Help me to treat them with kindness and respect, understanding that they are a part of your creation. May my work bring honor to you and provide for my family and community.

Lord, I ask for favorable weather and abundant harvests. Protect my land from drought, storms, and any other calamities that may threaten my livelihood. Give me peace and trust in your provision, even when times are tough.

Help me to be a good steward of the land. Preserving its beauty and productivity for future generations. Guide me in my decisions, so that I may work in harmony with nature and honor you in all that I do.

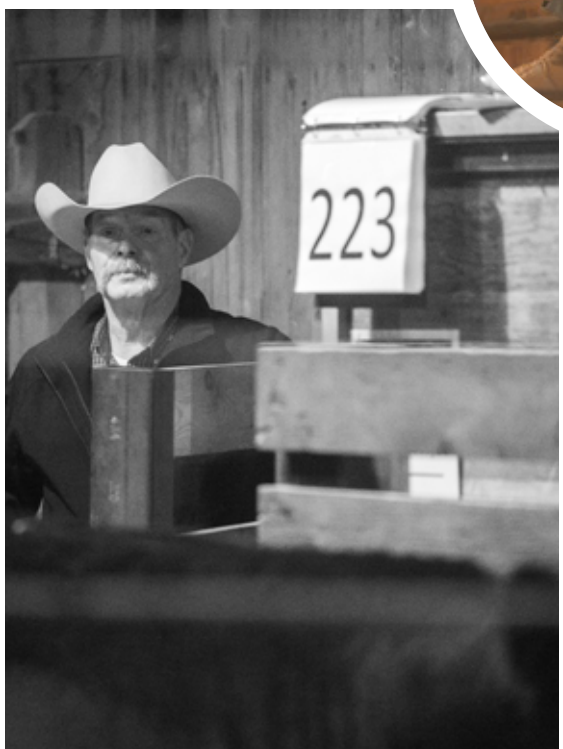
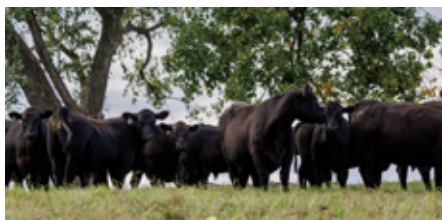
Thank you for the blessings of the land and the life of a rancher. May my work be a reflection of your love and care for all of creation.

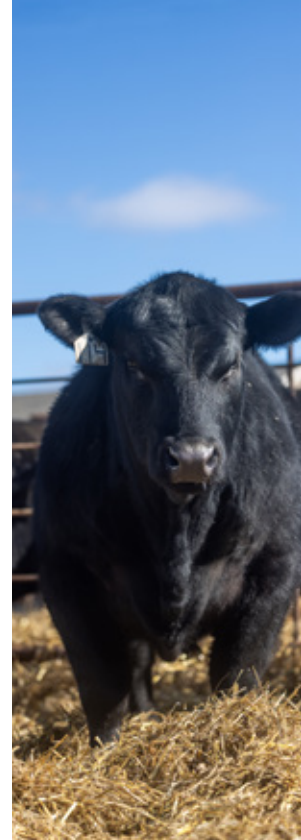
IN JESUS' NAME, I PRAY, AMEN.

THANK YOU TO OUR CREW!



**RAISING CATTLE
THAT CREATE LEGACIES.**





Rylee & Alani at the last show of the season, North Star Classic in Valley City. We are excited for her to become a breeding piece in Rylee's herd.



TEAMWORK!



Rylee had a heck of a summer run with her show heifer she purchased from Becker Stock Farm winning Supreme Overall Female in multiple shows across the state!

Kaylee got back in the show ring with one of her raised heifers at the 2025 North Star Classic Show in Valley City, ND.



S P R U N K A N G U S & E R D M A N N A N G U S

SPRUNK - ERDMANN

Erdmann Angus Ranch
13460 Hwy 27
Lisbon, ND 58054



FRIDAY, FEBRUARY 27, 2026

1 PM • LISBON, ND • RANSOM COUNTY FAIRGROUNDS